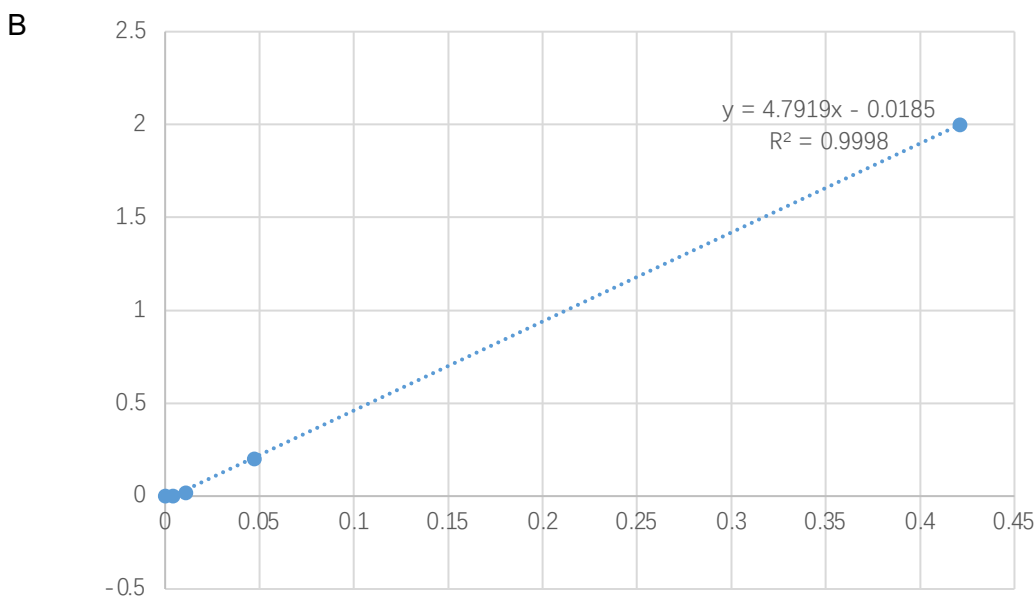
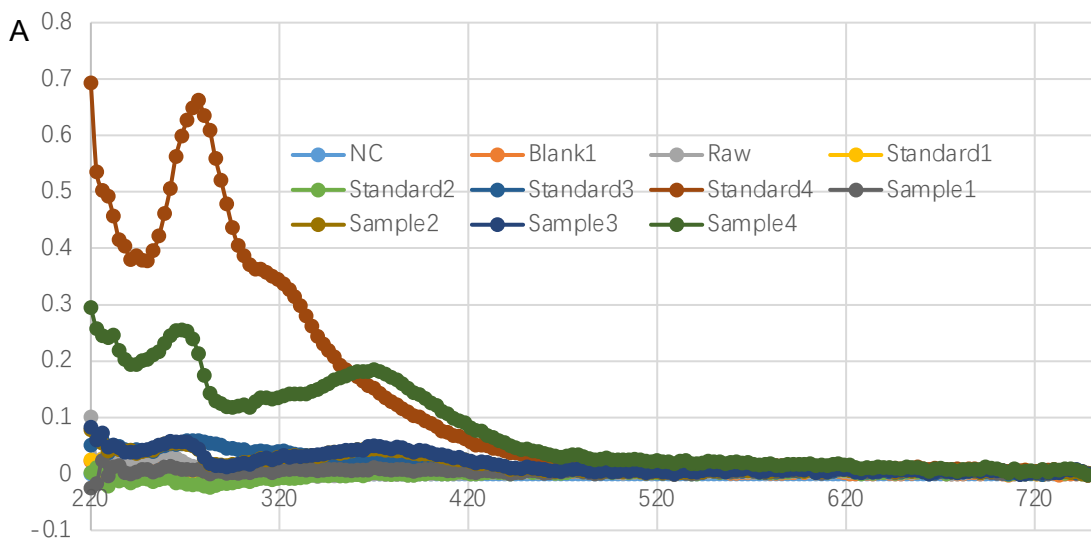


### Figure S1: Identification of MSCs

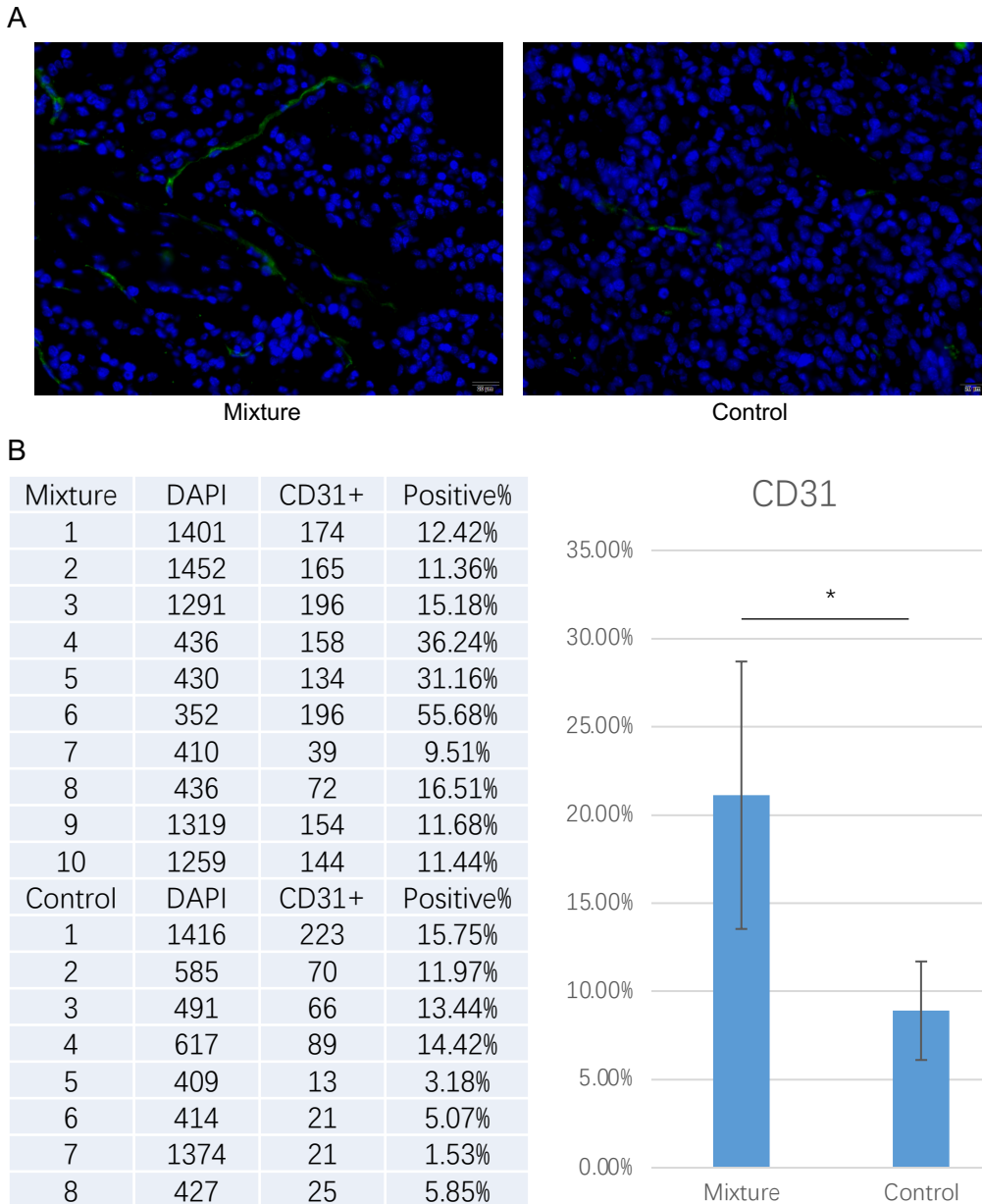
MSCs were identified by marking positive with CD73 and CD90, and negative with CD45 and HLA-DR.



**Figure S2: Quatitative test for Ethanolic extract of Astragalus (EEA)**

EEA were reacted with 5% sodium nitrite, and detected with an ultraviolet spectrophotometer. The absorbance was observed at 256nm and a standard curve was drawn by the concentration of the standard product of EEA. X presents wavelength, Y standards absorbance.

A: The spectrum drawn by the UV spectrophotometer. NC: normal control; Standard 1-4: the standard product of EEA; Raw: raw material; Sample1-4: EEA.  
B: The standard curve drawn with standard products of EEA.



### Figure S3: Microvessel density test

A: CD31 antibody was used to stained the vascular cells. Immunofluorescence detection for CD31 showed vascular cells increased after treatment of the mixture. Blue: DAPI; Green, CD31.

B: Statistical analysis was performed for CD31+ cells and analyzed with ImagePro to evaluate the differences in mean vessel density.