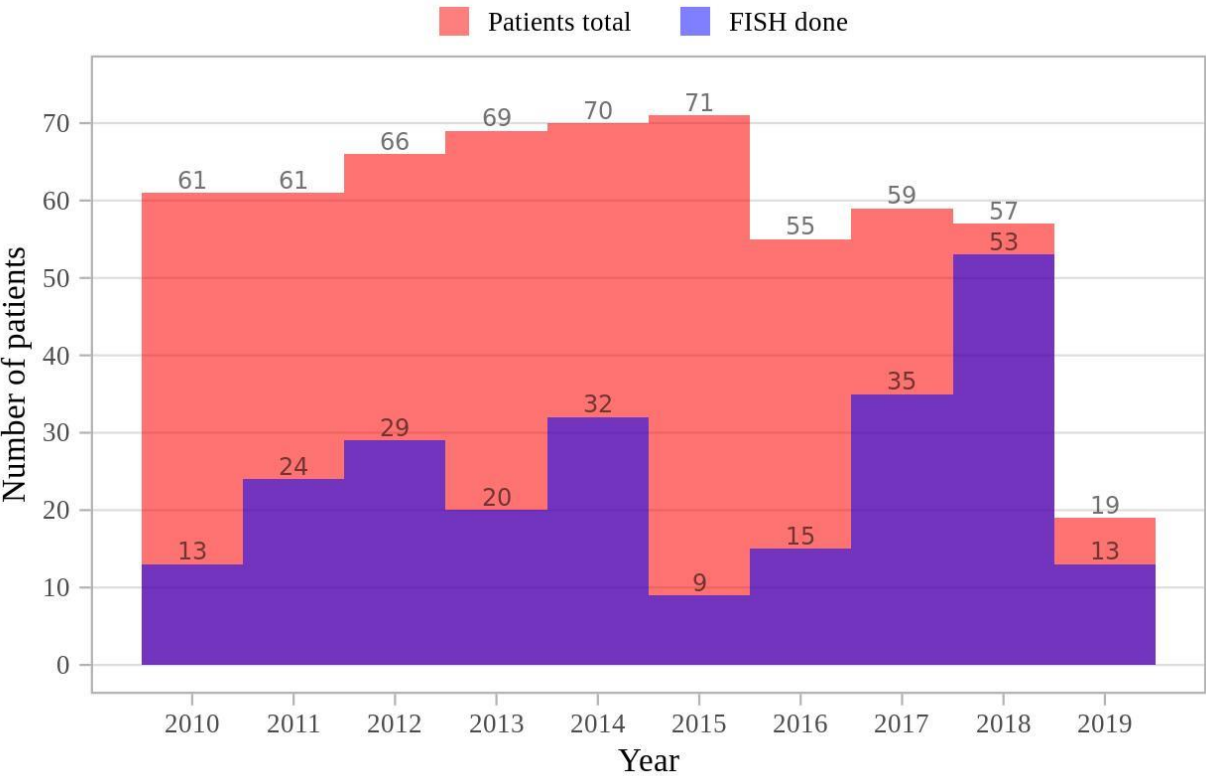
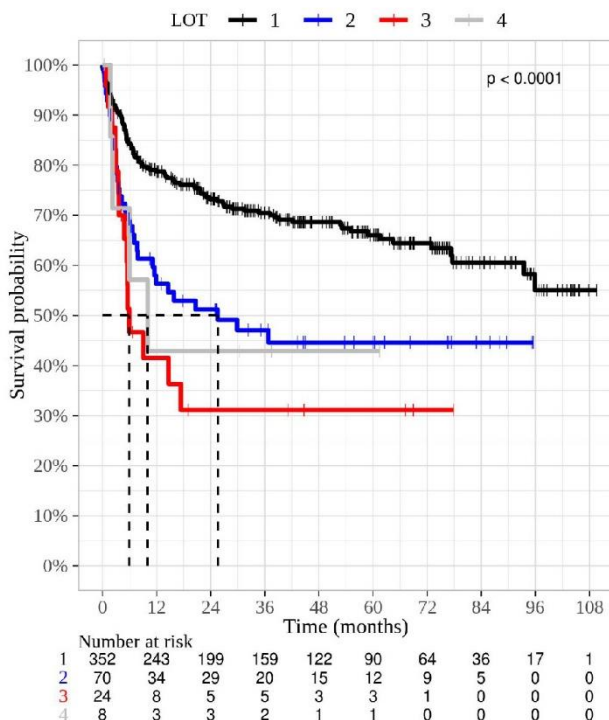


Supplementary Figures 1–16

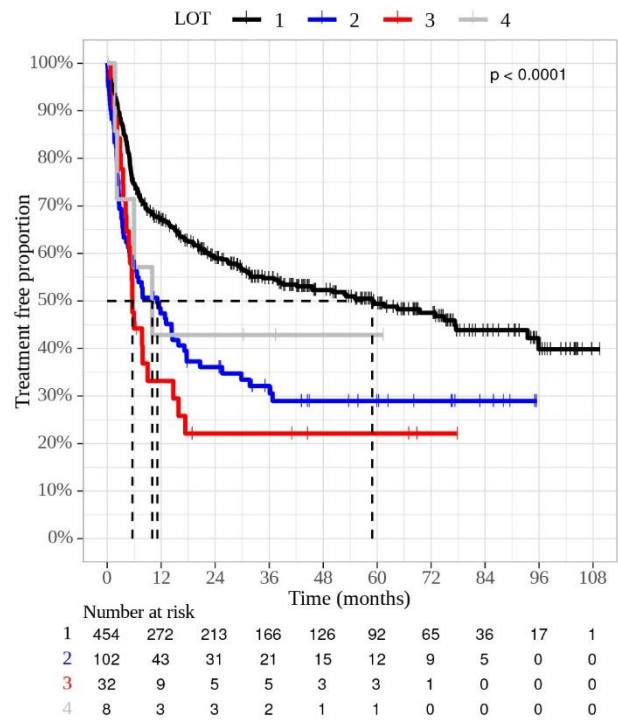


**Supplementary figure 1.** Annual number of DLBCL patients with performed fluorescence in situ hybridisation analysis (blue; FISH) relative to the total annual DLBCL patient numbers (red; patients total), among 587 adult patients at the Hospital District of Southwest Finland during 2010–2019

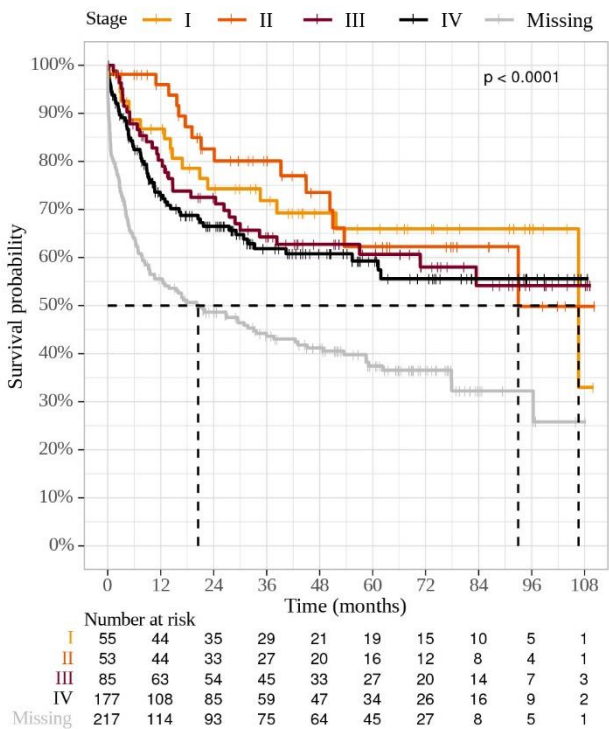
A



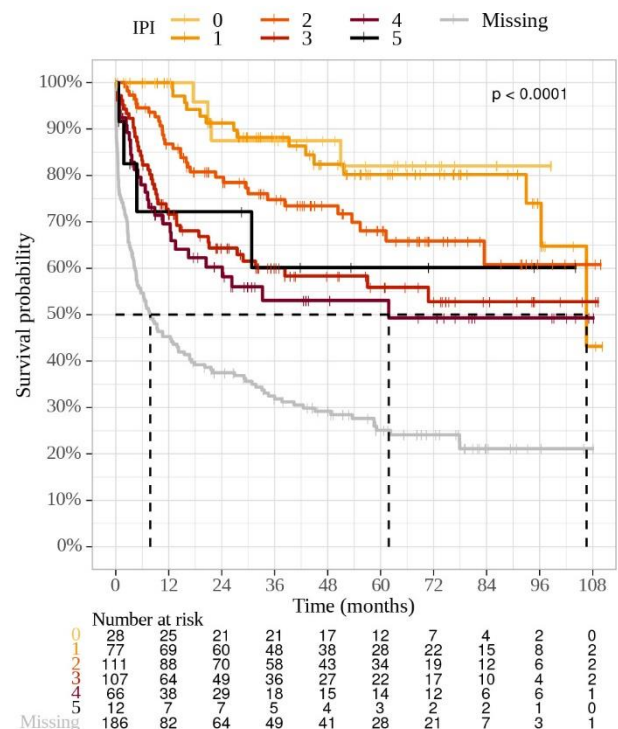
B



C

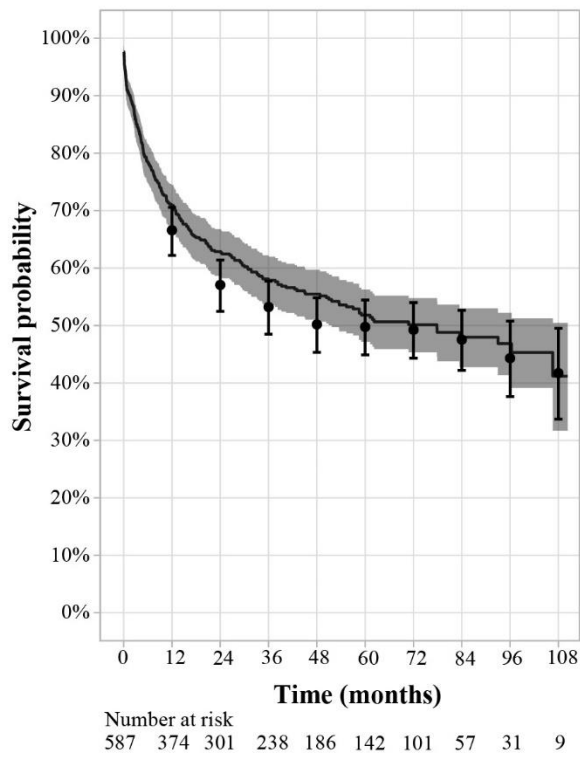


D

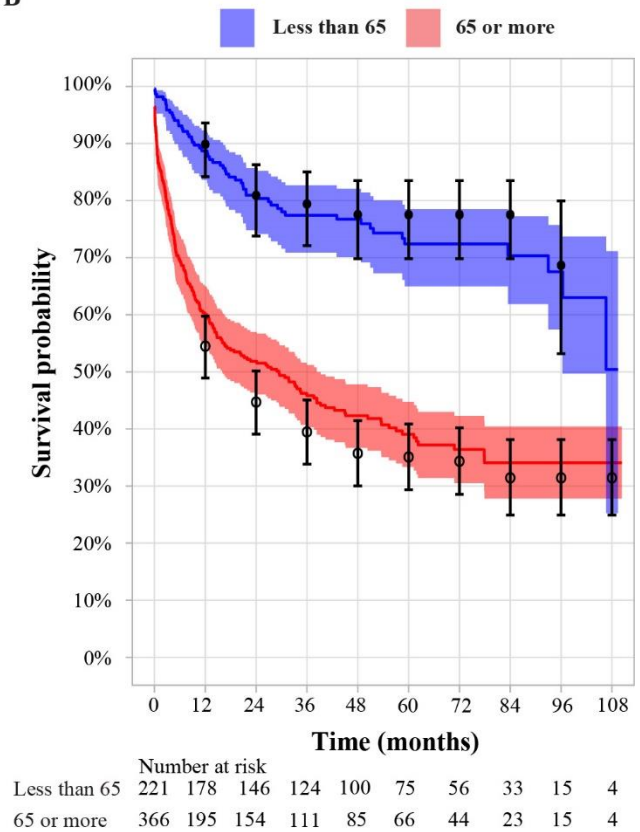


**Supplementary figure 2.** Kaplan-Meier estimates of overall survival (OS) from the beginning of the last detected line of immunochemotherapy (ICT LOT, referred as “LOT” in the figure; ICT LOT 1-4 assessed) (A), time to next treatment for ICT LOT 1-4 (B), and OS from index stratified by IPI (C) and stage at index (D), among 587 adult DLBCL patients at the Hospital District of Southwest Finland during 2010–2019. Significance level, 0.05. Note that up to four ICT treatment lines were captured during the follow-up time and thus, time-to-next-treatment result of ICT LOT 4 consists only of death or end of follow-up events.

A



B



**Supplementary figure 3.** Validation of the overall survival analyses of the current study (solid lines) with the respective data received from the Finnish Cancer Registry (black circles with confidence interval bars). A) Overall survival of all patients. B) Overall survival of patients stratified according to age.