

Developing an immune signature for triple-negative breast cancer to predict prognosis and immune checkpoint inhibitor

Supplementary Material

Table of contents

Table

Table S1 R packages in the study

Table S2 66 prognostic IRGs of IPRS

Table S3 Multivariate Cox regression for IPRS

Table S4 Pathway enrichment analysis for 66 IRGs including KEGG and GO database

Figure

Figure S1 Flow diagram of the study

Figure S2 | (A) Kaplan-Meier curve of progression-free survival in training set; (B) Kaplan-Meier curve of metastasis-free survival in validation set

Figure S3 | (A) The summary of the overall mutation profile in training set; (B) Mutation profile in training set

Figure S4 Bar chart of the relative proportion of the 22 immune cells in each patient in training set

Figure S5 | (A) Bar chart of the relative proportion of the 22 immune cells in each patient in validation set; (B) The difference of proportions of 21 immune infiltration cells in high-risk and low-risk group in validation set

Figure S6 | (A) Immune score between high-risk and low-risk group in validation set; (B) Stromal score between high-risk and low-risk group in validation set; (C) PD-1 expression between high-risk and low-risk group in validation set; (D) PD-L1 expression between high-risk and low-risk group in validation set; (E) PD-L2 expression between high-risk and low-risk group in validation set; (F) CTLA-4 expression between high-risk and low-risk group in validation set

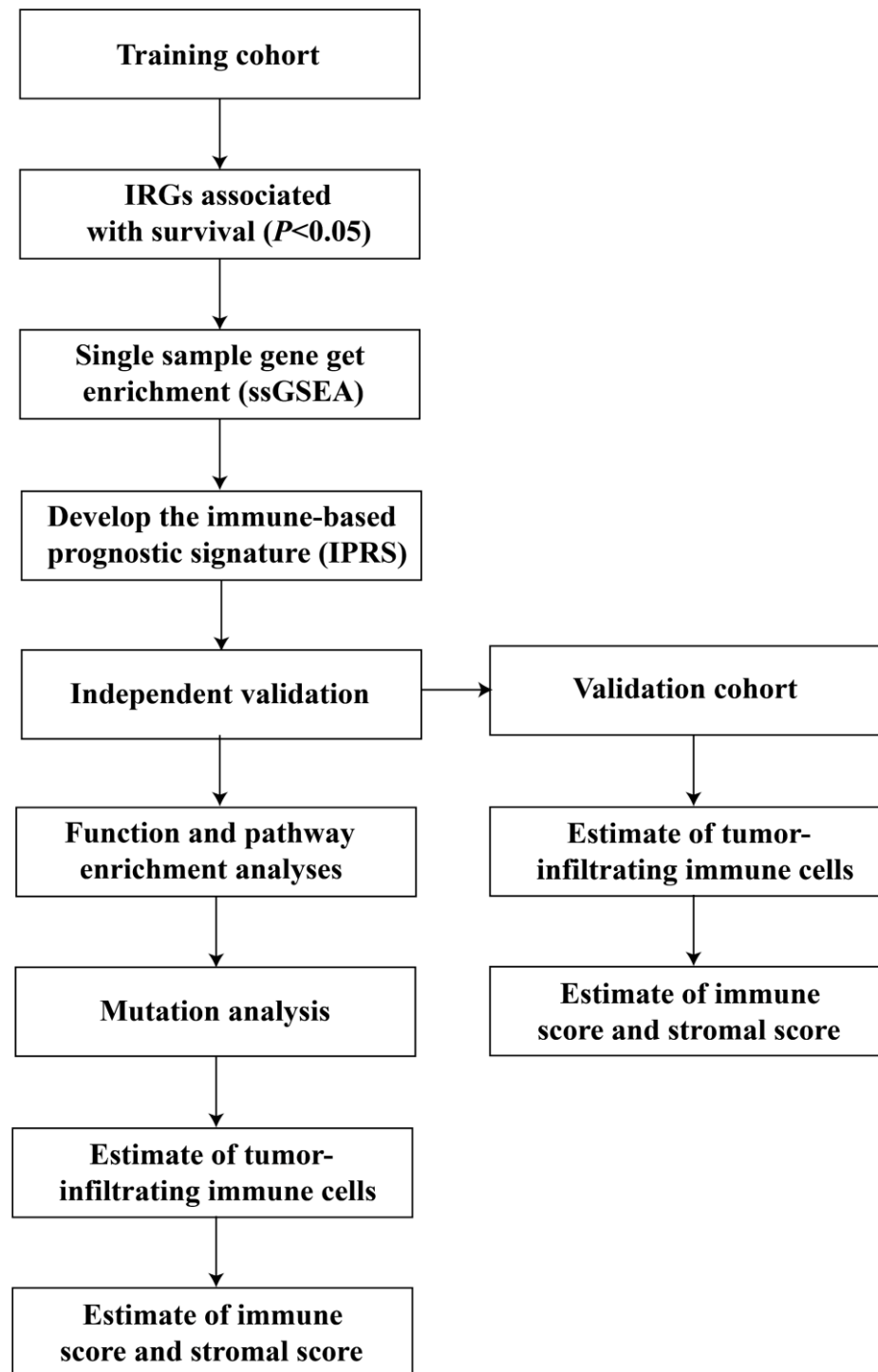


Figure S1 Flow diagram of the study

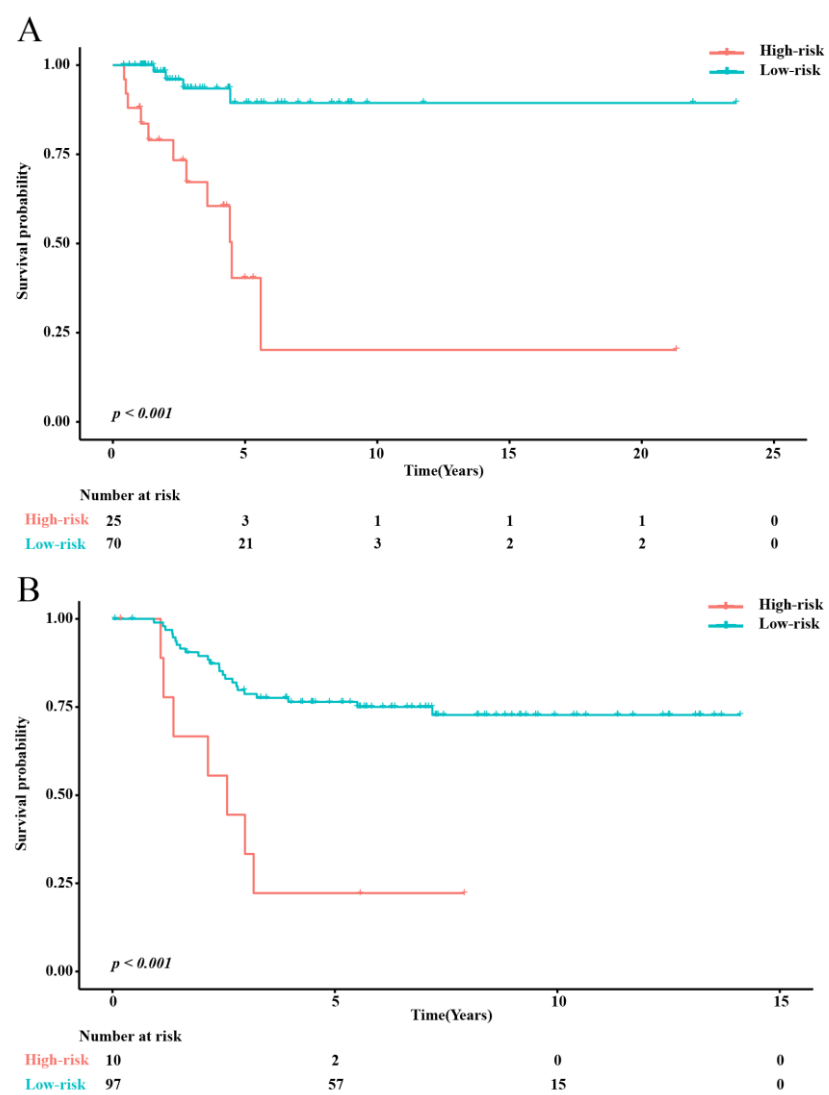


Figure S2 | (A) Kaplan-Meier curve of progression-free survival in training set; (B) Kaplan-Meier curve of metastasis-free survival in validation set

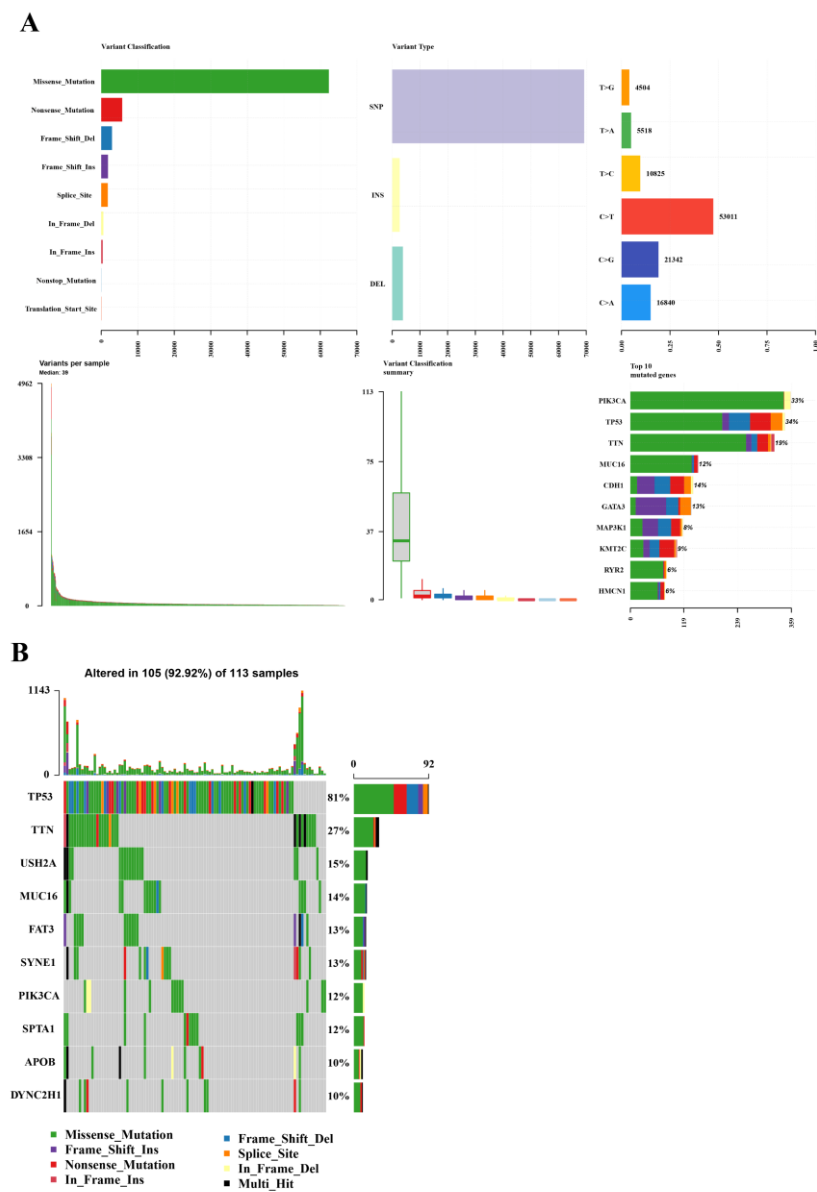


Figure S3 | (A) The summary of the overall mutation profile in training set; (B) Mutation profile in training set

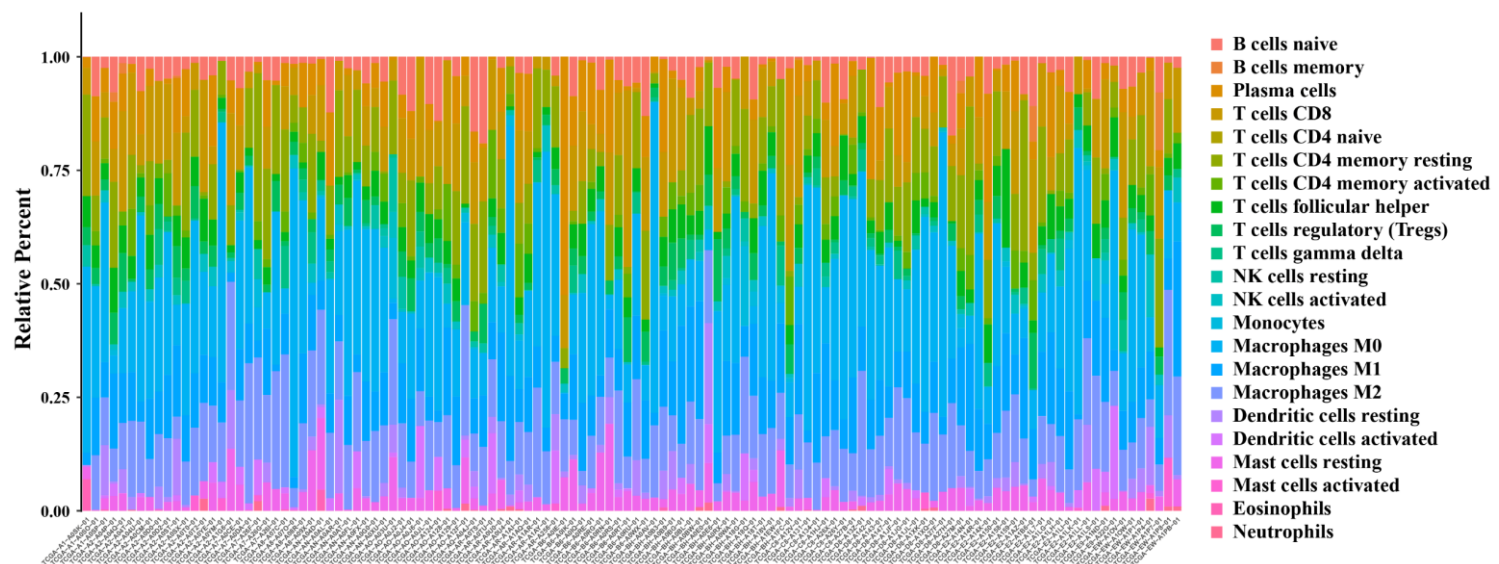


Figure S4 Bar chart of the relative proportion of the 22 immune cells in each patient in training set

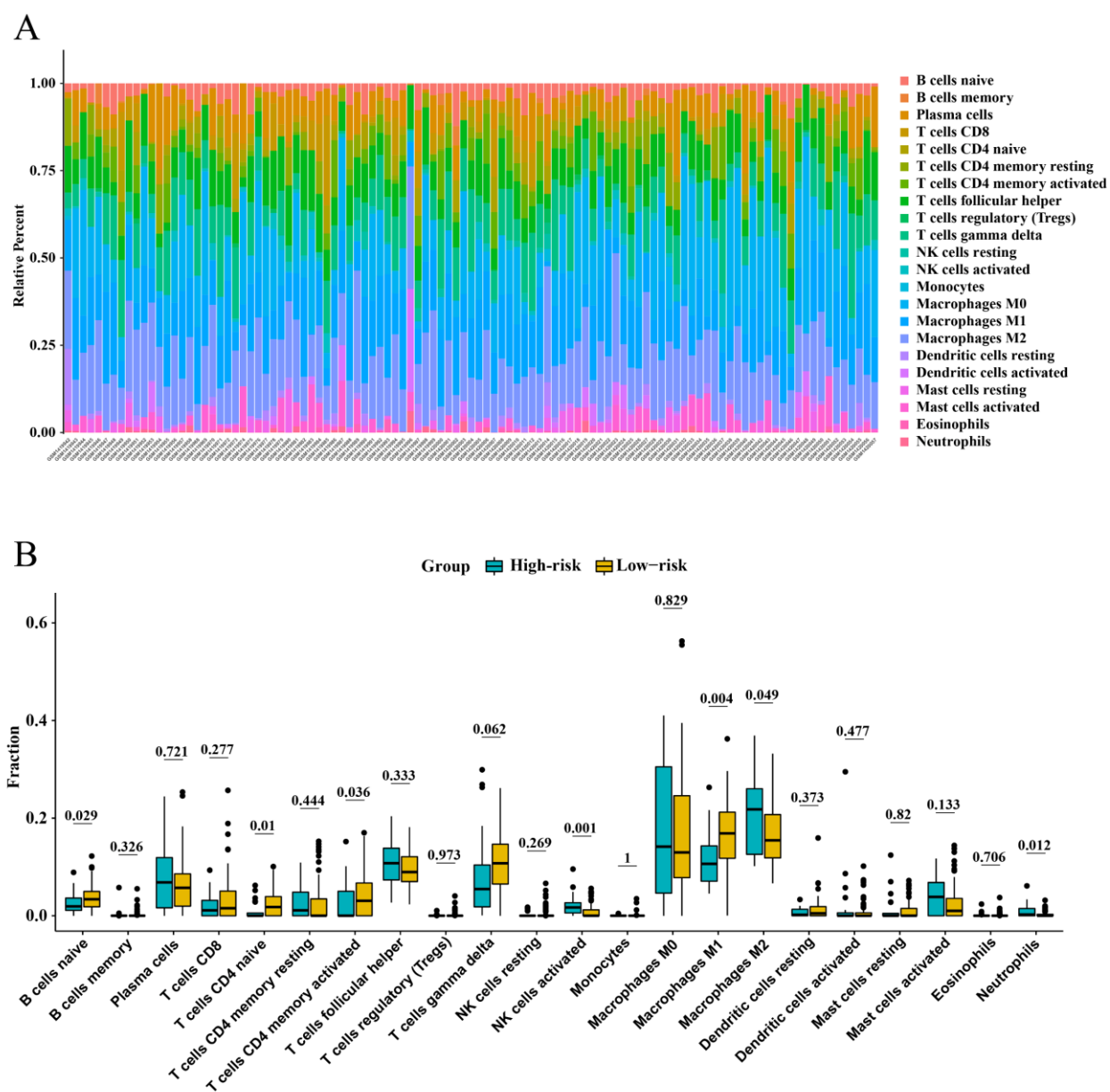


Figure S5 | (A) Bar chart of the relative proportion of the 22 immune cells in each patient in validation set; (B) The difference of proportions of 21 immune infiltration cells in high-risk and low-risk group in validation set

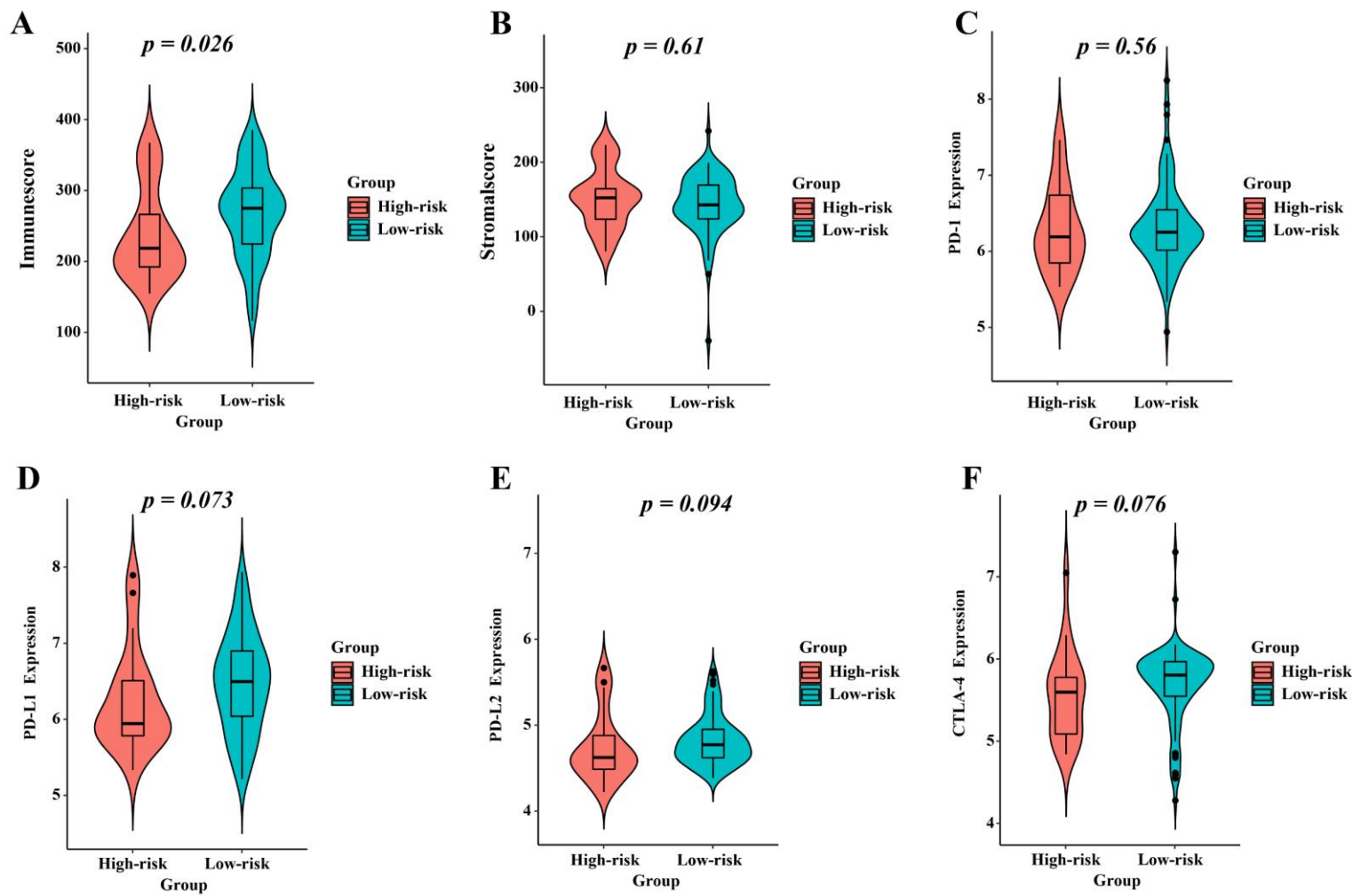


Figure S6 | (A) Immune score between high-risk and low-risk group in validation set; (B) Stromal score between high-risk and low-risk group in validation set; (C) PD-1 expression between high-risk and low-risk group in validation set; (D) PD-L1 expression between high-risk and low-risk group in validation set; (E) PD-L2 expression between high-risk and low-risk group in validation set; (F) CTLA-4 expression between high-risk and low-risk group in validation set