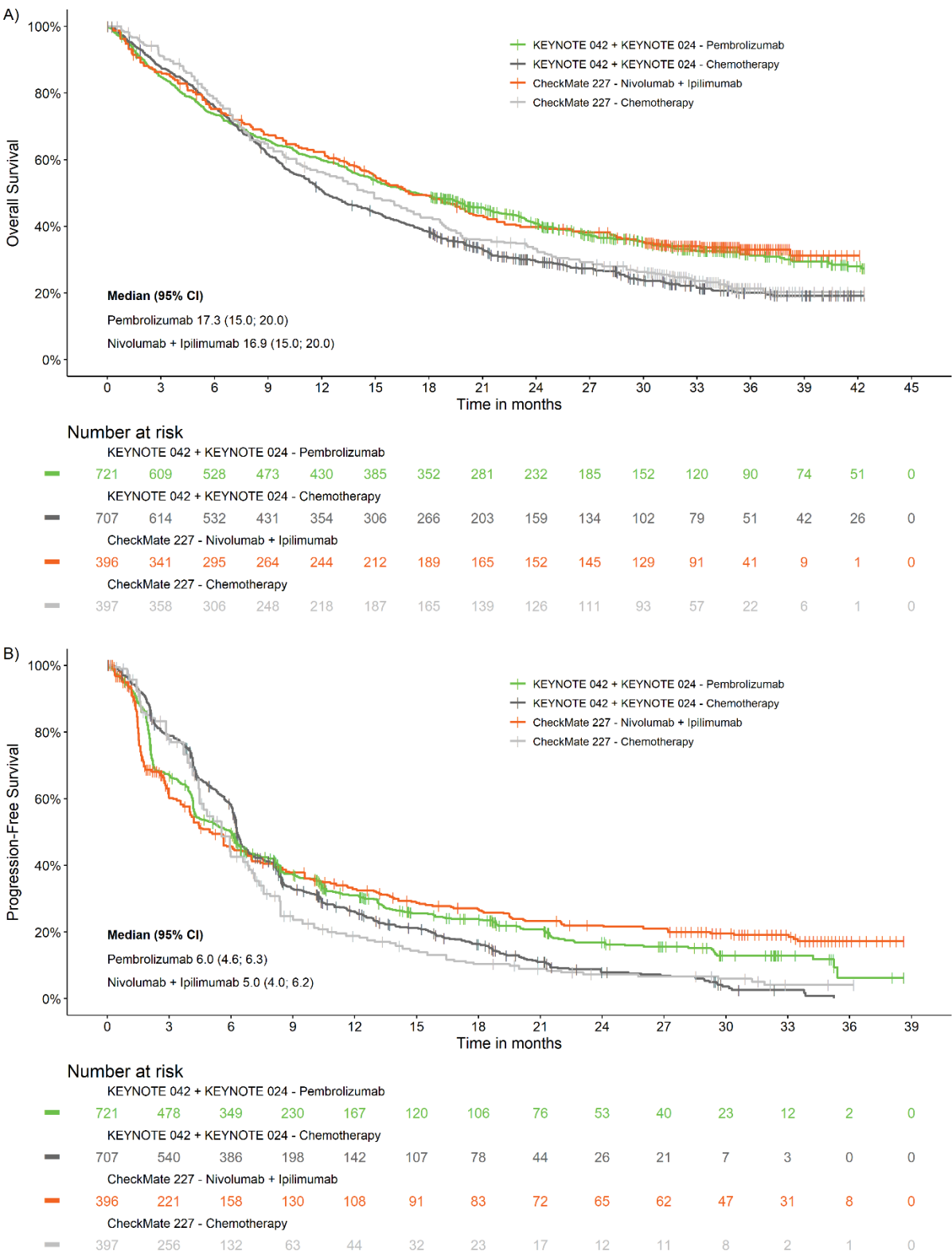


**Title:** Indirect comparison of pembrolizumab monotherapy versus nivolumab+ipilimumab in first-line metastatic lung cancer

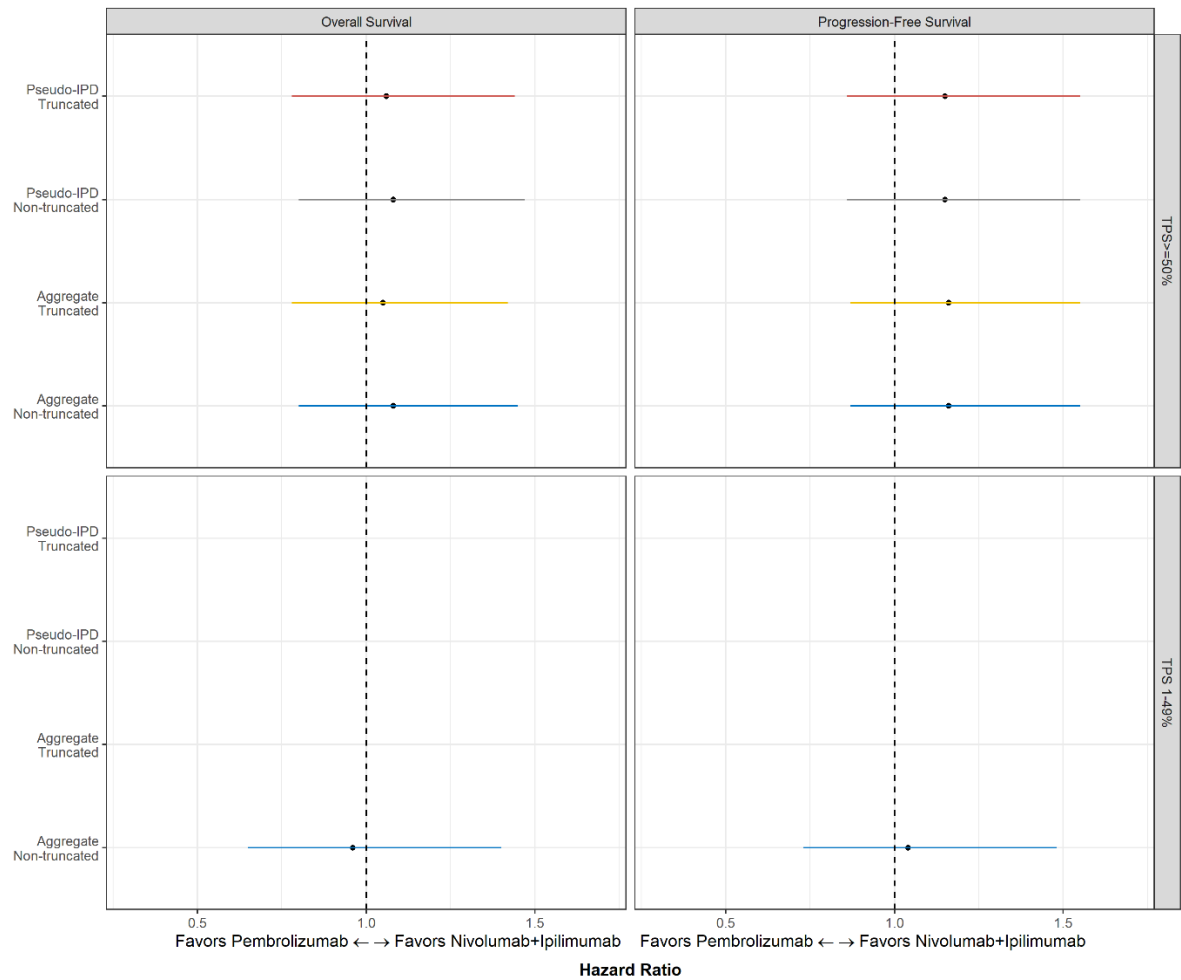
**Authors:** \*Balazs Halmos<sup>1</sup>, Thomas Burke<sup>2</sup>, Chrysostomos Kalyvas<sup>3</sup>, Ralph Insinga<sup>2</sup>, Kristel Vandormael<sup>3</sup>, Andrew Frederickson<sup>4</sup>, Bilal Piperdi<sup>5</sup>

**Figure S1**  
**Kaplan–Meier curves before matching adjustment for a) overall survival b)**  
**progression-free survival**



**Figure S2**

**Forest plot of pembrolizumab versus nivolumab+ipilimumab for overall survival and progression-free survival in patients with PD-L1 TPS 1–49% and  $\geq 50\%$ <sup>a</sup>**



a: The results illustrated with the yellow lines refer to the base case analysis.

IPD: individual patient data; PD-L1: Programmed cell death ligand 1; TPS: tumor proportion score.