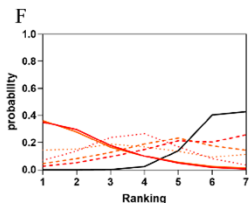
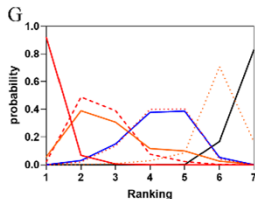
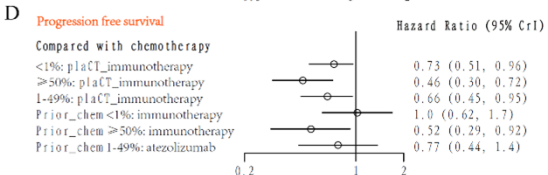
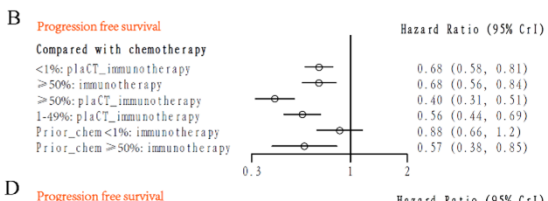


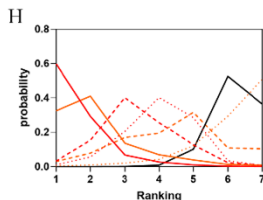
— ≥50%: chemotherapy\_immunotherapy  
 - - - 1-49%: chemotherapy\_immunotherapy  
 . . . . . <1%: chemotherapy\_immunotherapy



— ≥50%: Prior\_chem\_immunotherapy  
 - - - 1-49%: Prior\_chem\_immunotherapy  
 . . . . . <1%: Prior\_chem\_immunotherapy



— ≥50%: plaCT\_nivolumab\_ipilimumab  
 - - - 1-49%: plaCT\_nivolumab\_ipilimumab  
 . . . . . <1%: plaCT\_nivolumab\_ipilimumab



— ≥50%: immunotherapy  
 - - - 1-49%: immunotherapy  
 . . . . . chemotherapy