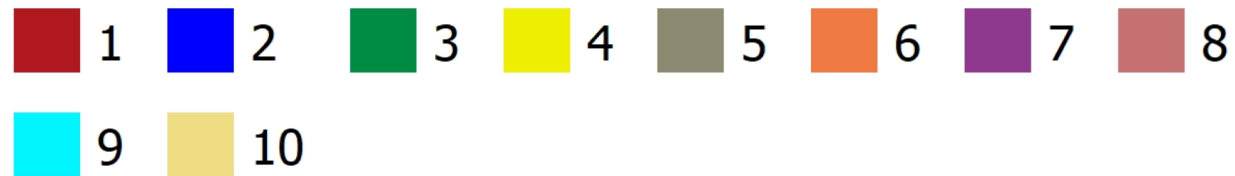
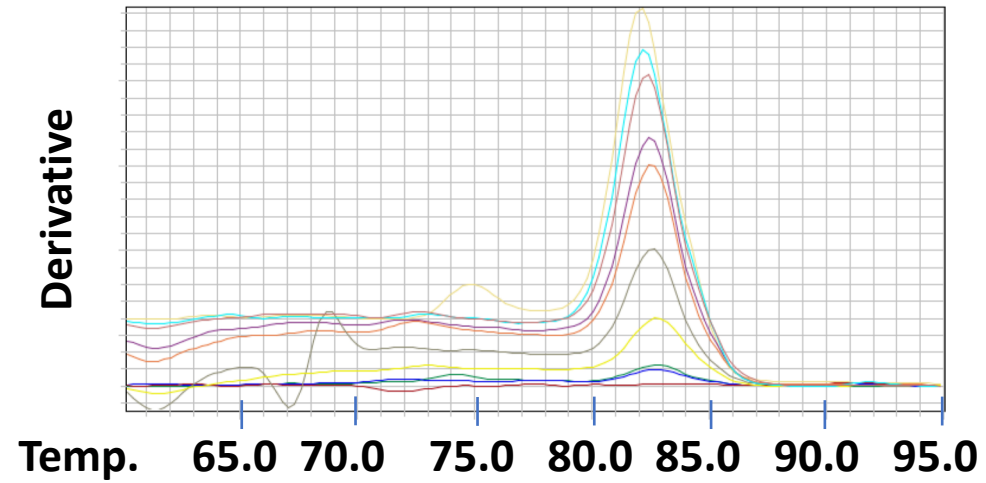


Fig S3

**Melt Curve Plot**  
**patient S1 template double dilutions; primers mix #8**



### **Figure S3**

**Melt curve plot of double dilutions of PCR amplicons of SARS-COV-2 viral RNA extracted from nasopharyngeal swabs of patient S1.** RNA was subjected to one-tube RT-PCR and amplicons were subjected to double-dilutions (#1 the most concentrated, #9 the most diluted and #10 no amplicon). SYBR green and ROX dyes were added and melt curve was performed. Data show derivative reporter. These findings are consistent with the no-shift finding shown in **Figure 1E**.