

SCHEMATIC REPRESENTATION OF PCR PRIMERS' LOCATIONS ON SARS-COV-2 SYNTHETIC RNA ORF "N" AND "S"

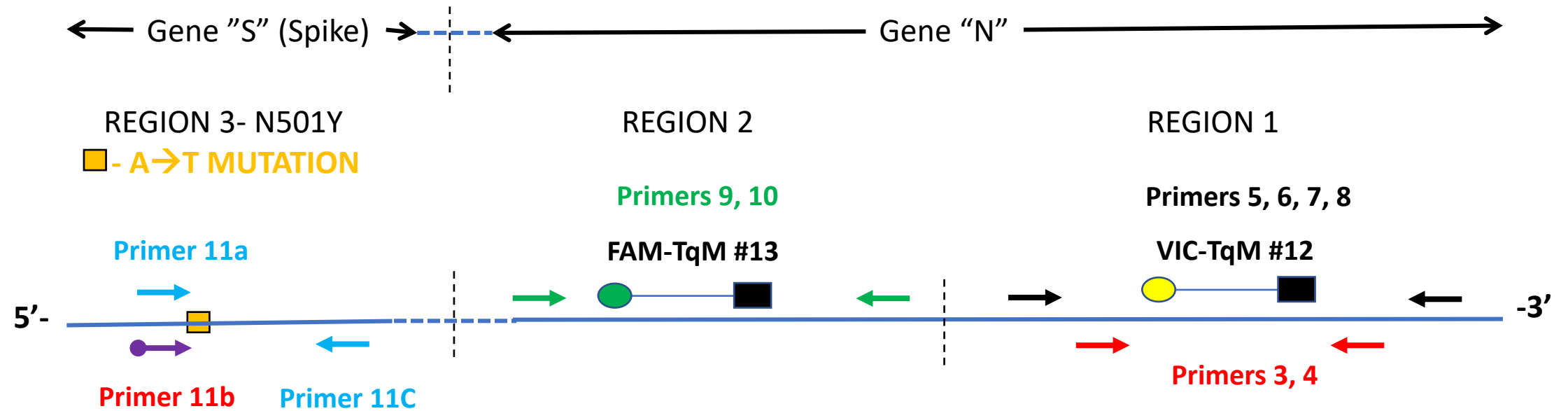


Figure S2

Schematic representation of PCR primers' locations on SARS-COV-2 genes "N"

(Nucleoprotein) and "S" (Spike). Two TaqMan probes were designed for two regions on the SARS-COV-2 "N" gene: for region 1 VIC-TqM probe #12, and for region 2 FAM-TqM probe #13. For region 1, primers #5- #8 flank primers #5 and #6 and therefore produce a longer amplicon than the later primers, but both sets can utilize VIC-TqM probe #12. For region 2, primers #9- #10 utilize FAM-TqM probe #13. Primer mixes #3, #5, #7, #9 are random-coil normal type. Primer mixes #4, #6, #8, #10 are D-B type. Region 3 represents the spike gene and primer mixes 11a+11c and 11b+11C were designed to preferentially amplify targets of wild type or N501Y mutation targets, respectively. For specific Sequences of the primers seen **Table S1**.