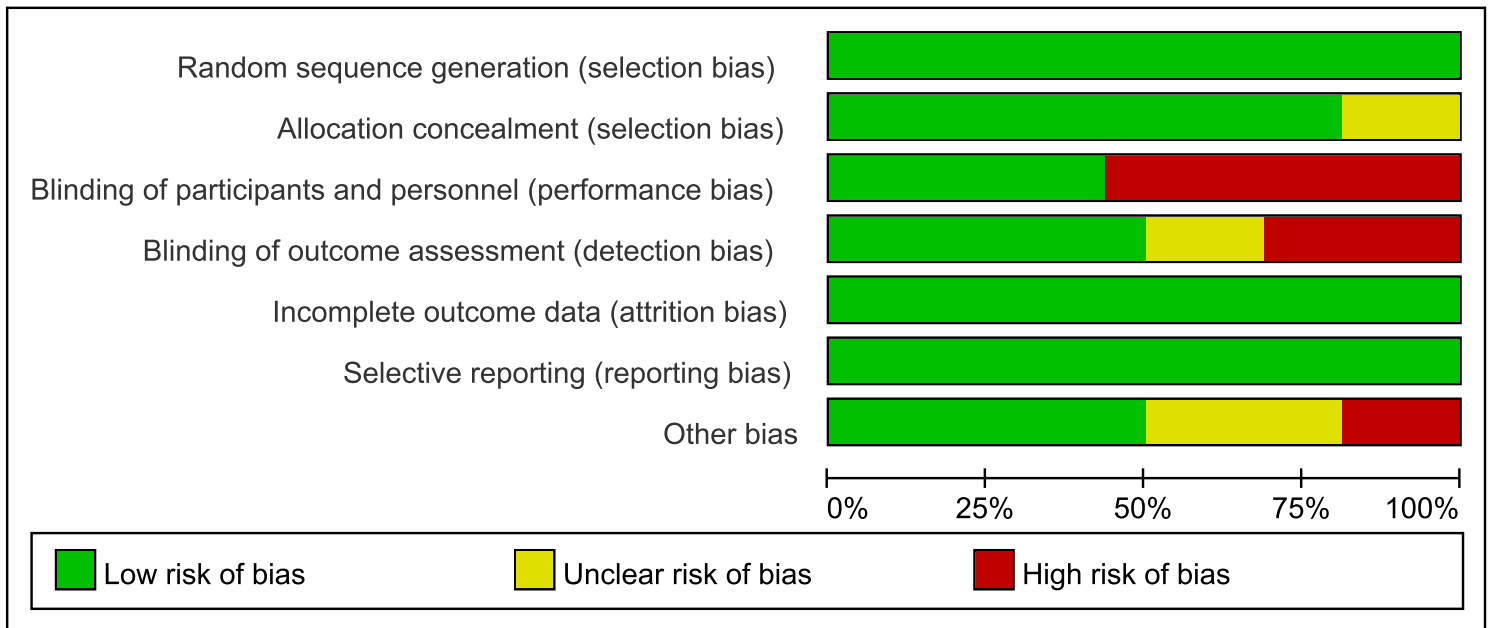


Figure S1: PRISMA flow diagram. 1281 potentially relevant articles were identified by the search strategy, which were eventually restricted to 15 after independent evaluation of three authors.

A

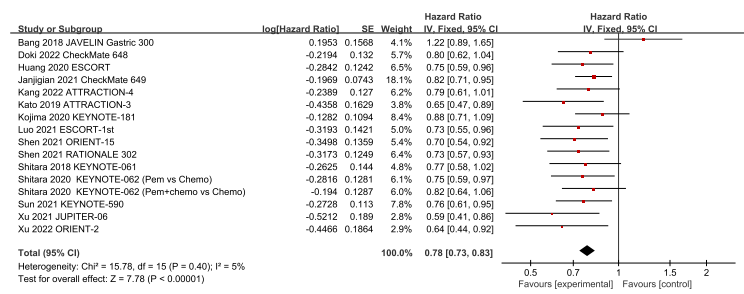


B

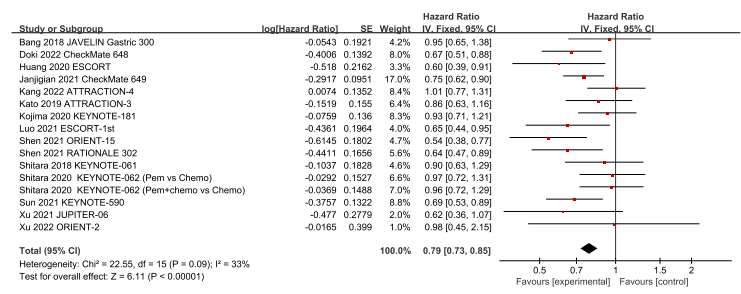


Figure S2: Assessment of bias risk, (A) risk of bias graph, (B) risk of bias summary. Cochrane Collaboration Tool was used in the assessment of risk of bias independently assessed by three different authors. RCTs included in the analysis were divided into “low risk”, “high risk”, or “unclear risk” of bias across predefined domains (selection, performance, attrition, and reporting bias).

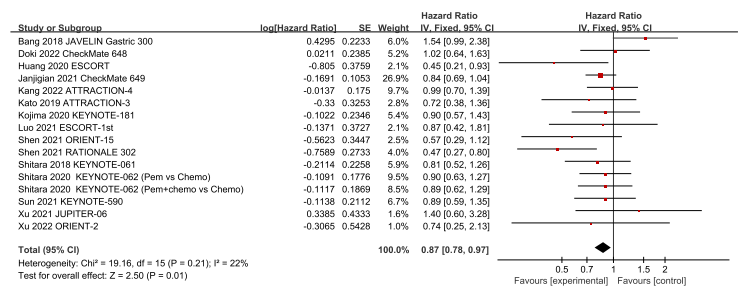
A Aged <65 years



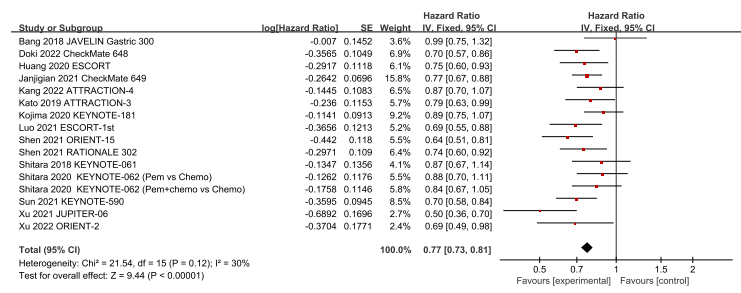
Aged ≥65 years



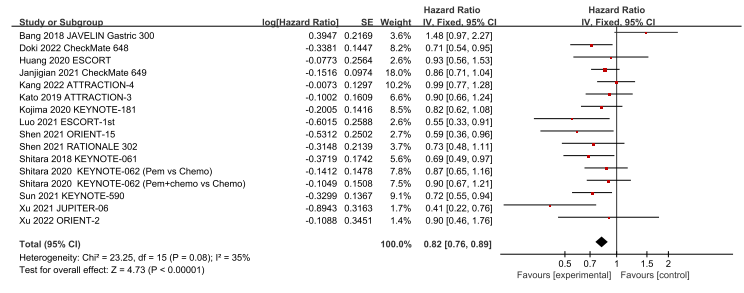
B Female



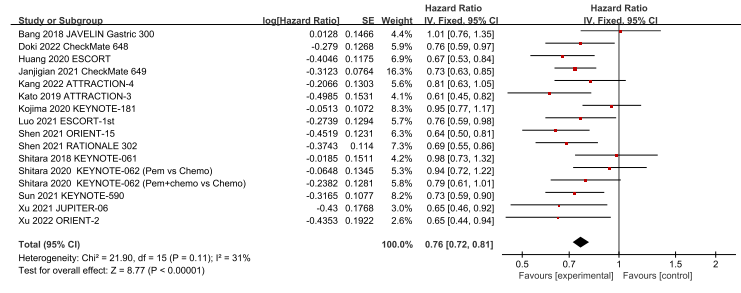
Male



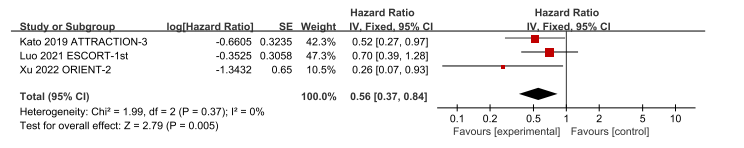
C PS 0



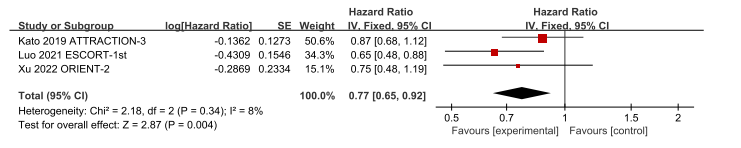
PS 1



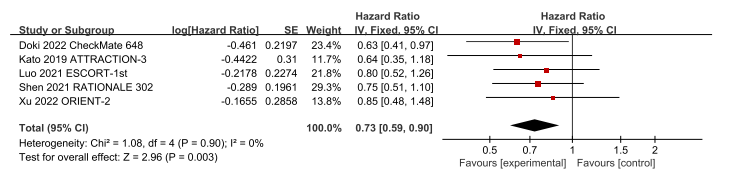
D Active smoker



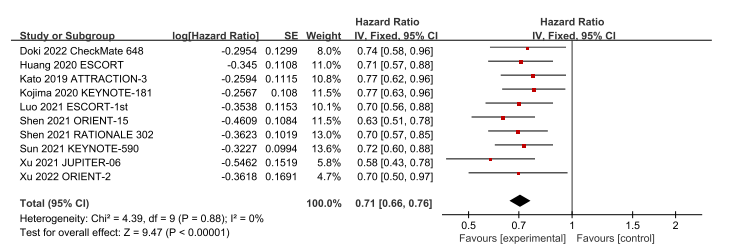
Previous smoker



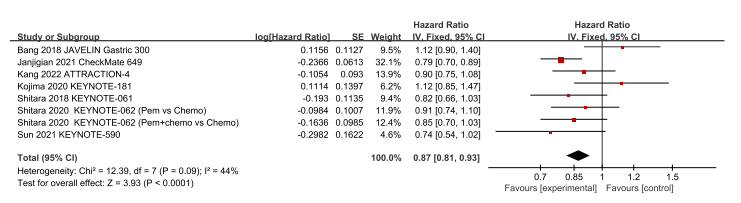
Never smoker



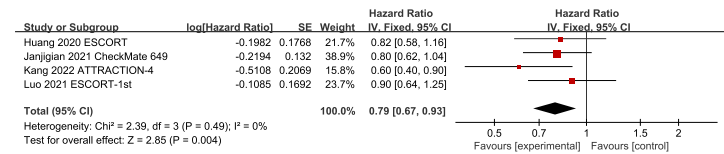
E Squamous carcinoma



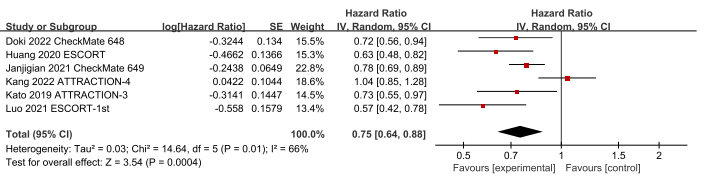
Adenocarcinoma



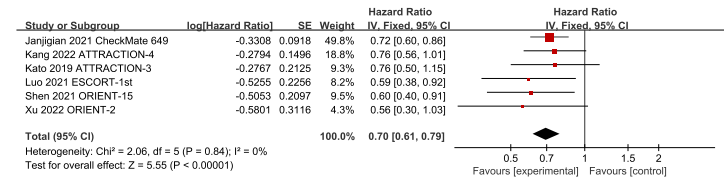
F With 1 organ metastasis



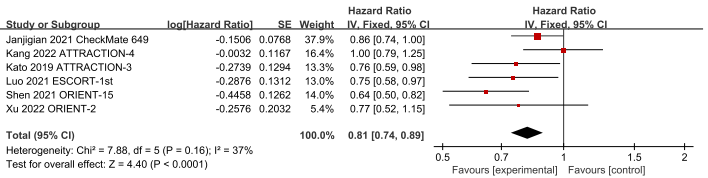
With ≥2 organs metastases



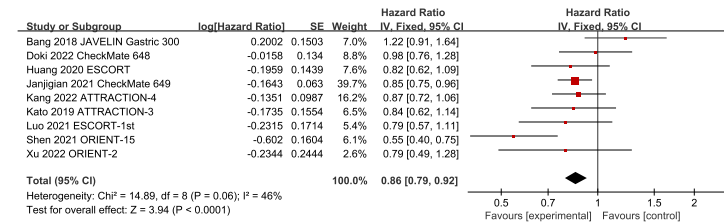
G With liver metastasis



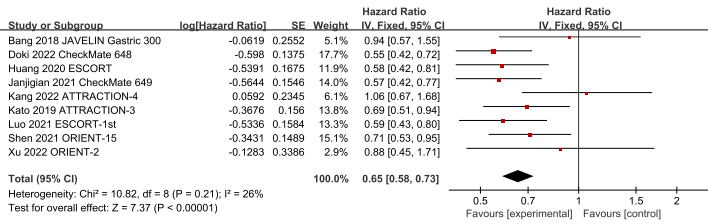
Without liver metastasis



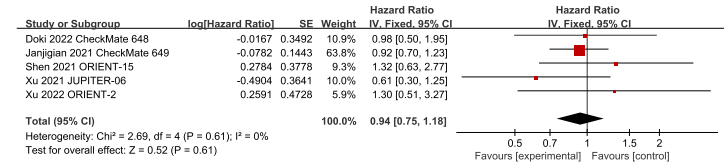
H PD-L1 expression on TPS <1%



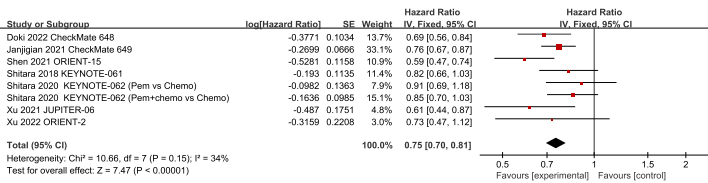
PD-L1 expression on TPS ≥1%



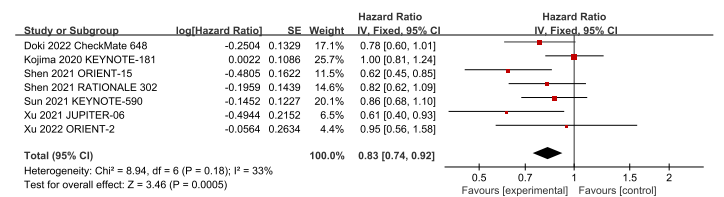
I PD-L1 expression on CPS <1



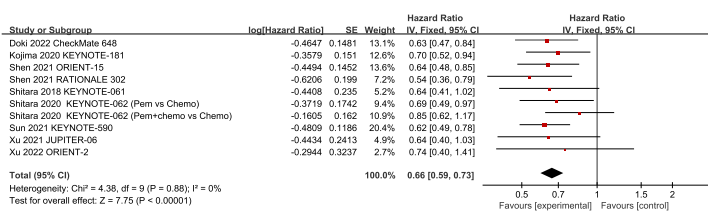
PD-L1 expression on CPS ≥1



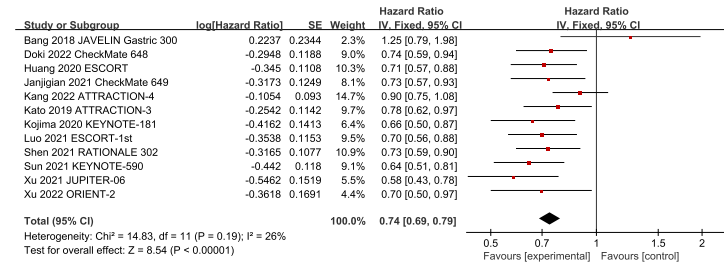
PD-L1 expression on CPS <10



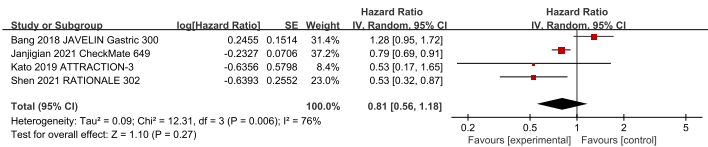
PD-L1 expression on CPS ≥10



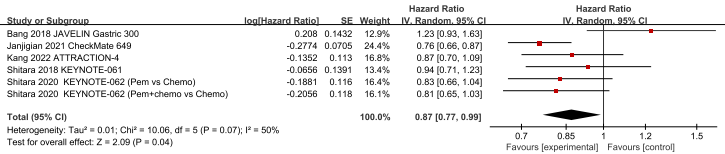
J Asian



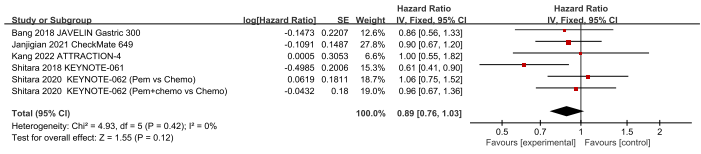
White



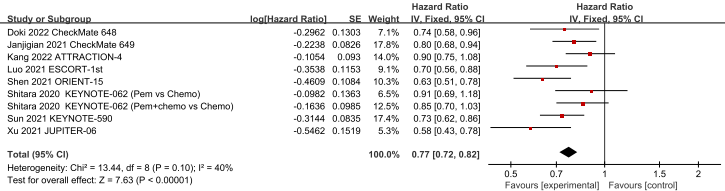
K Primary gastric tumour



Primary oesophagogastric junction tumour



L 0 prior therapy



1 prior therapy

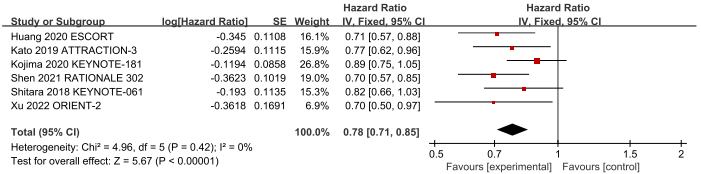
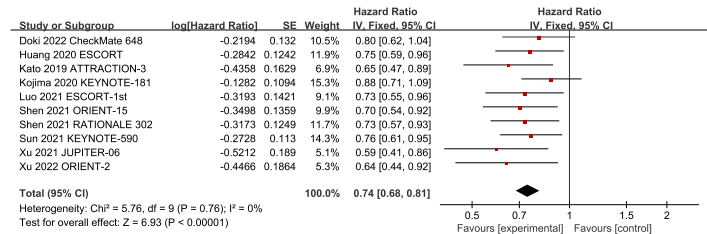
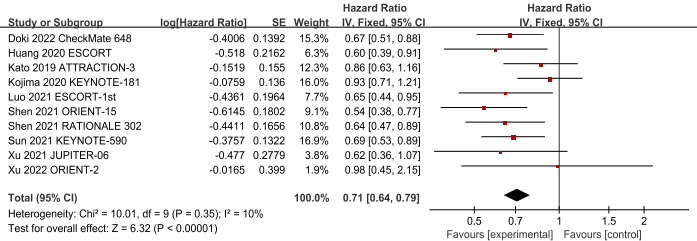


Figure S3: Forest plots of HRs comparing OS between anti-PD-1/PD-L1 therapy and chemotherapy in gastroesophageal cancer with respect to (A) age group, (B) gender, (C) PS score, (D) smoking status, (E) histological type, (F) number of organs with metastases, (G) liver metastatic status, (H) PD-L1 expression on TPS, (I) PD-L1 expression on CPS, (J) race, (K) primary tumor sites, (L) number of prior therapies. Statistical analyses were performed by using Review Manager 5.3 software; forest plots were used to assess HRs to describe the relationship between treatment and clinical outcomes in the specified cohorts of patients.

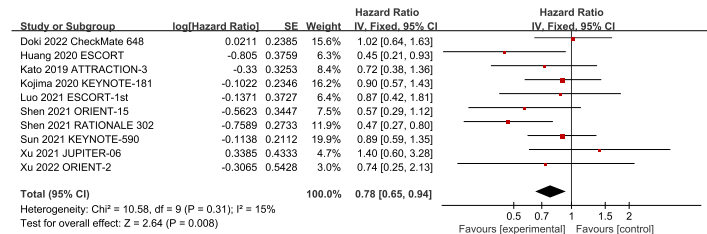
A Aged <65 years



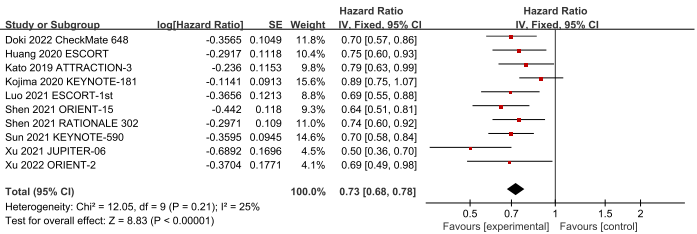
Aged ≥65 years



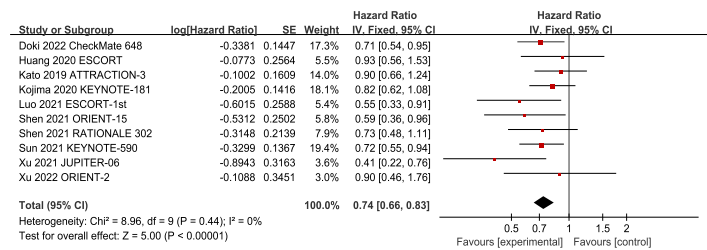
B Female



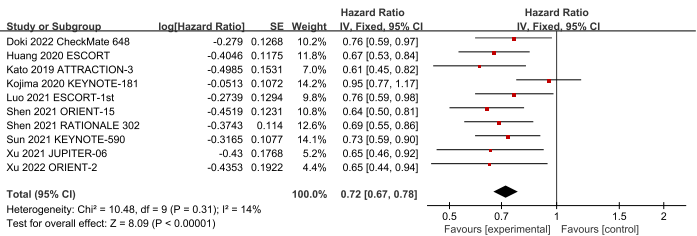
Male



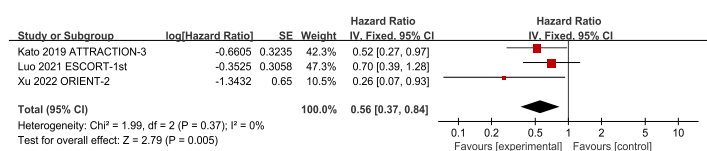
C PS 0



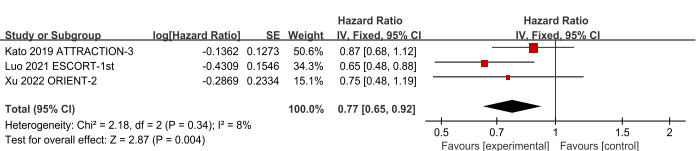
PS 1



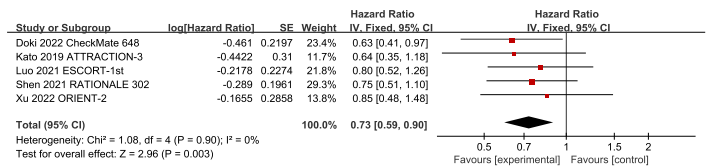
D Active smoker



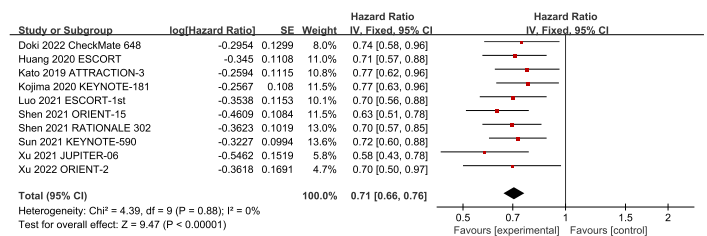
Previous smoker



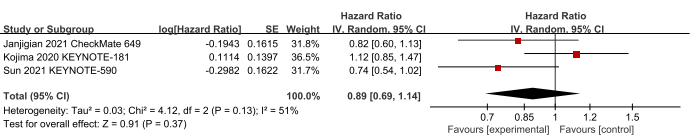
Never smoker



E Squamous

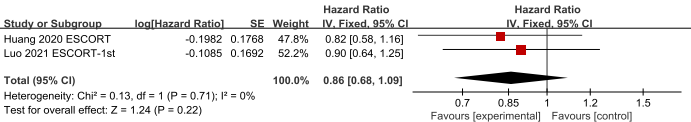


Adenocarcinoma

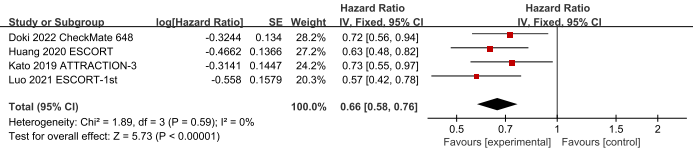


F

With 1 organ metastasis

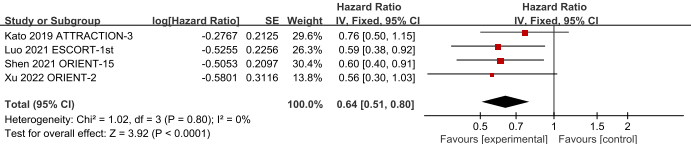


With ≥2 organs metastases

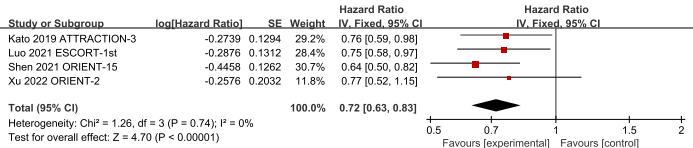


G

With liver metastasis

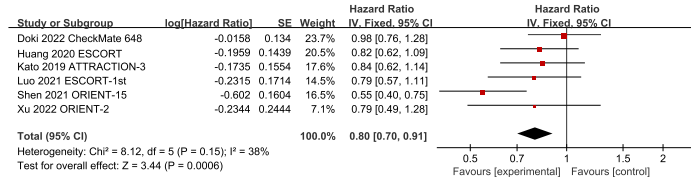


Without liver metastasis

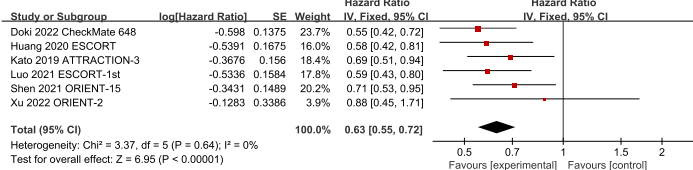


H

PD-L1 expression on TPS <1%

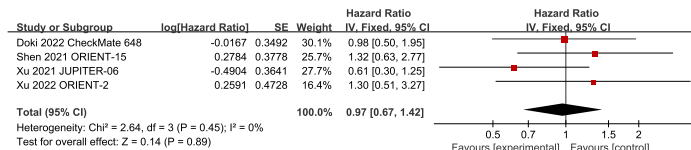


PD-L1 expression on TPS ≥1%

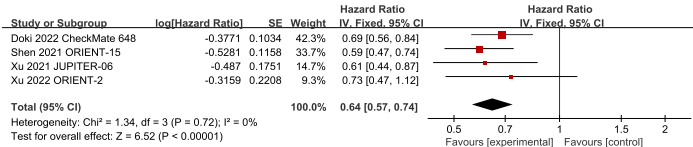


I

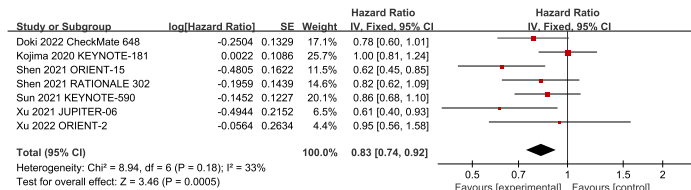
PD-L1 expression on CPS <1



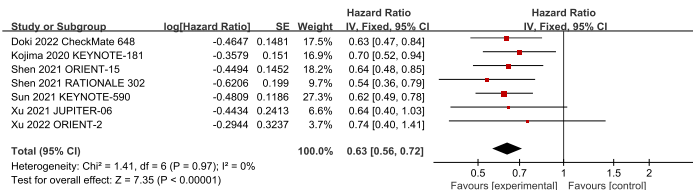
PD-L1 expression on CPS ≥1



PD-L1 expression on CPS <10

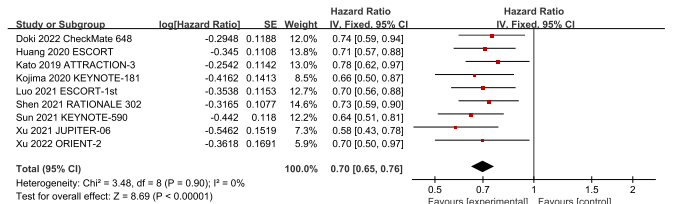


PD-L1 expression on CPS ≥10

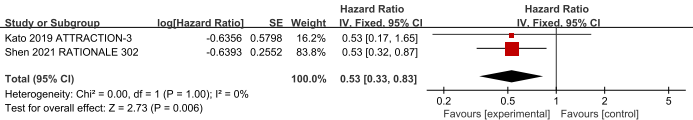


J

Asian



White



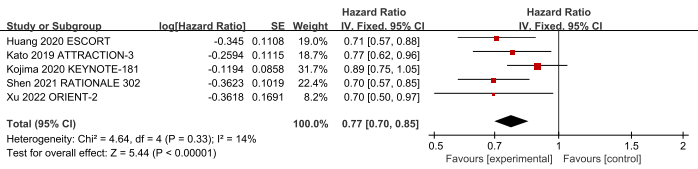
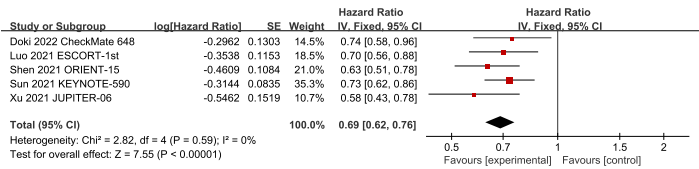
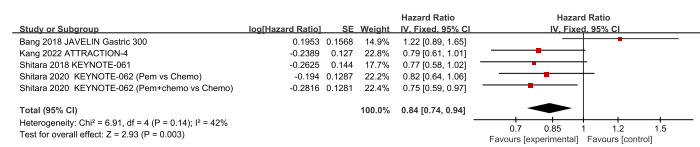
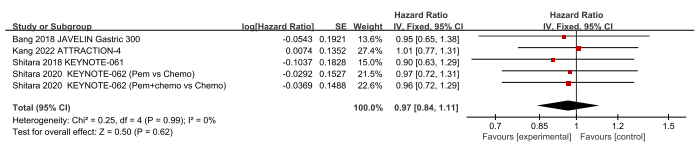


Figure S4: Forest plots of HRs comparing OS between anti-PD-1/PD-L1 therapy and chemotherapy in ECwith respect to (A) age group, (B) gender, (C) PS score, (D) smoking status, (E) histological type, (F) number of organs with metastases, (G) liver metastatic status, (H) PD-L1 expression on TPS, (I) PD-L1 expression on CPS, (J) race, (K) number of prior therapies. Statistical analyses were performed by using Review Manager 5.3 software; forest plots were used to assess HRs to describe the relationship between treatment and clinical outcomes in the specified cohorts of patients.

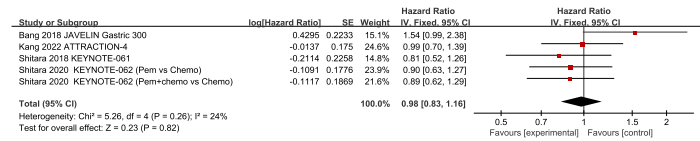
A Aged <65 years



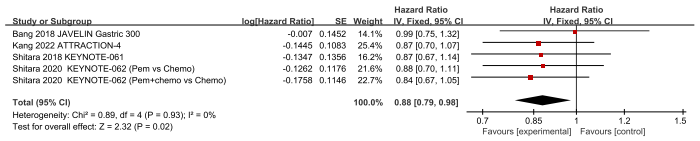
Aged ≥65 years



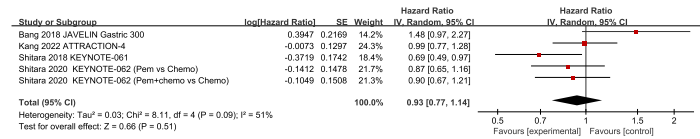
B Female



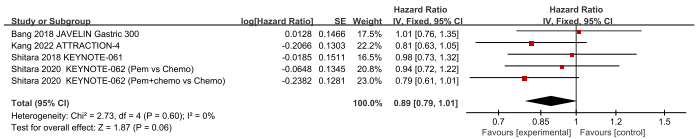
Male



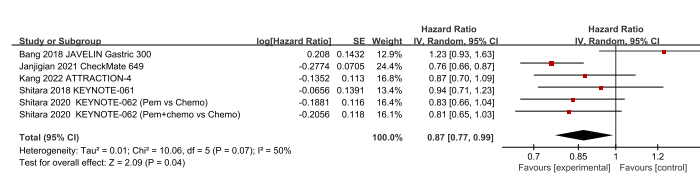
C PS 0



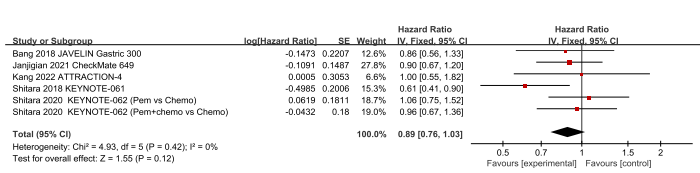
PS 1



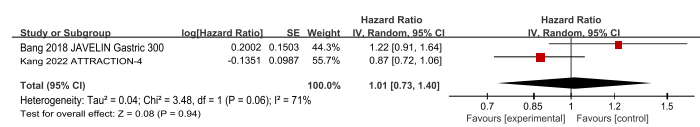
D Primary gastric tumour



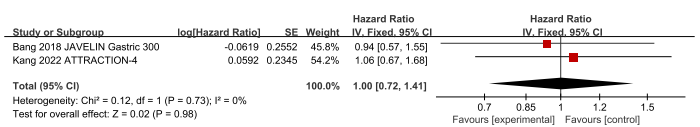
Primary oesophagogastric junction tumour



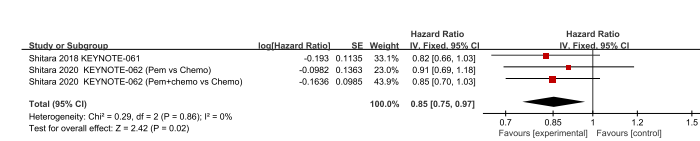
E PD-L1 expression on <1% of Tumour-cell



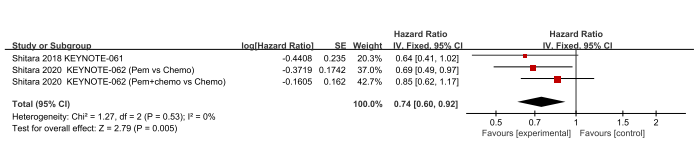
PD-L1 expression on ≥1% of Tumour-cell



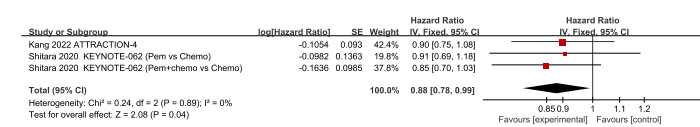
F PD-L1 combined positive score of 1 or higher



PD-L1 combined positive score of 10 or higher



G 0 prior therapy



≥1 prior therapy

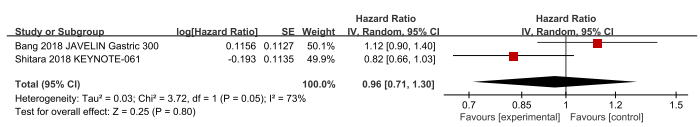
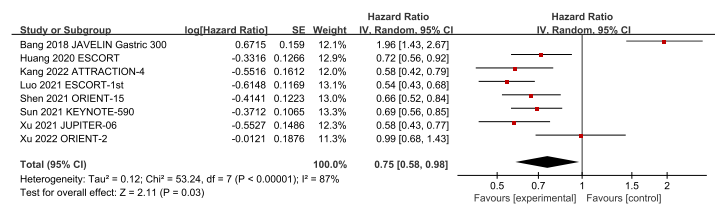
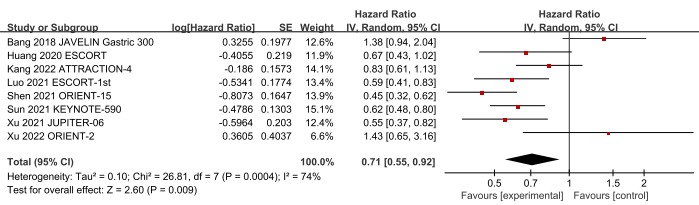


Figure S5: Forest plots of HRs comparing OS between anti-PD-1/PD-L1 therapy and chemotherapy in GC/GEJC with respect to (A) age group, (B) gender, (C) PS score, (D) primary tumour sites, (E) PD-L1 expression on TPS, (F) PD-L1 expression on CPS, (G) number of prior therapies. Statistical analyses were performed by using Review Manager 5.3 software; forest plots were used to assess HRs to describe the relationship between therapy and clinical outcomes in the specified cohorts of patients.

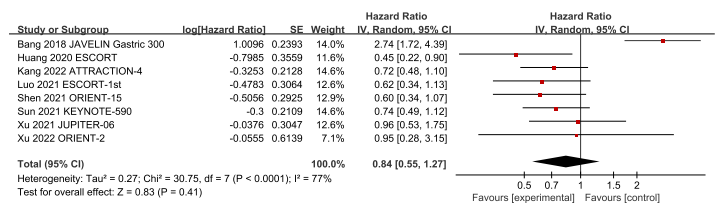
A Aged <65 years



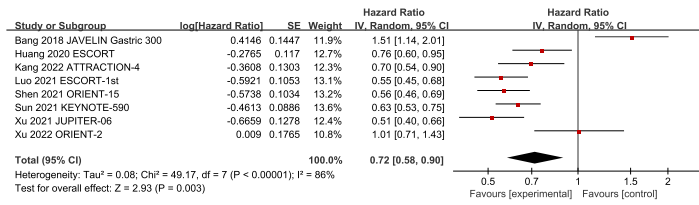
Aged ≥65 years



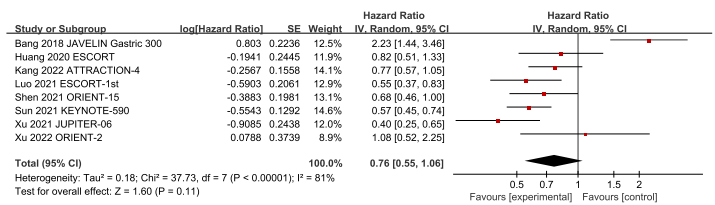
B Female



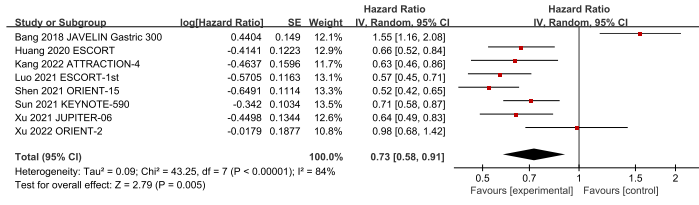
Male



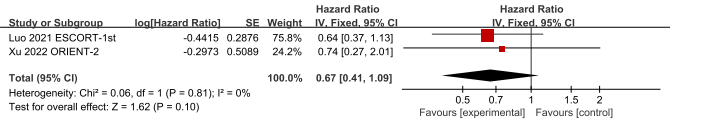
C PS 0



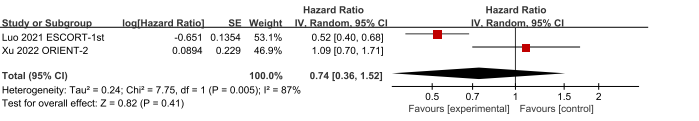
PS 1



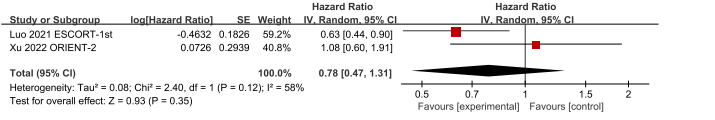
D Active smoker



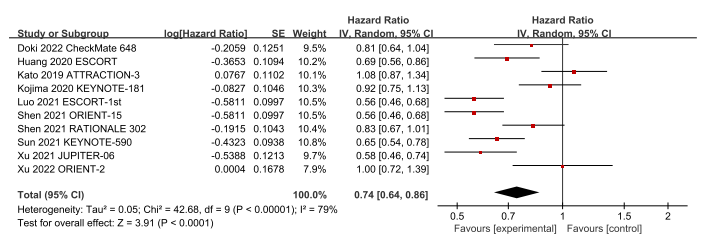
Previous smoker



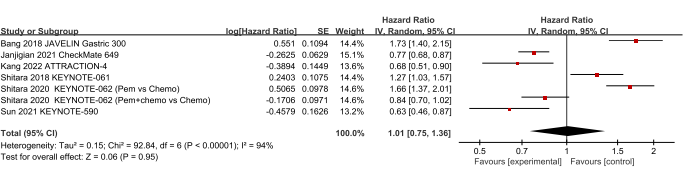
Never smoker



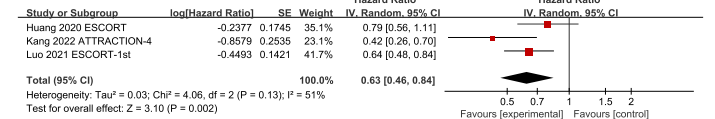
E Squamous carcinoma



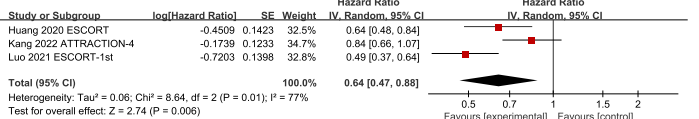
Adenocarcinoma



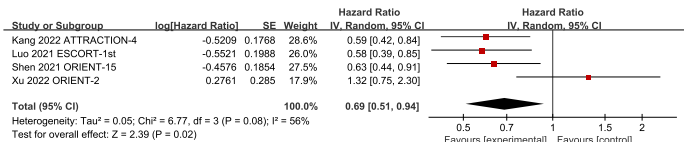
F With 1 organ metastasis



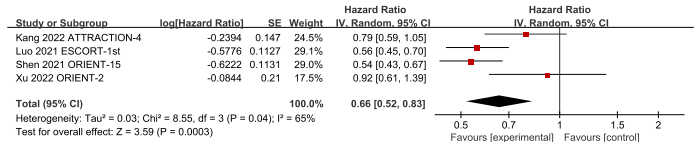
With ≥2 organs metastases



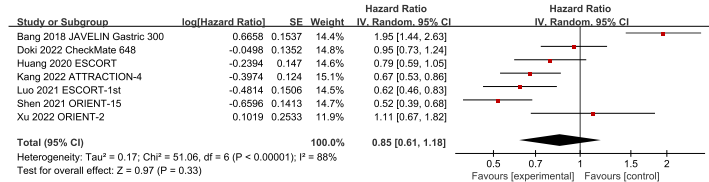
G With liver metastasis



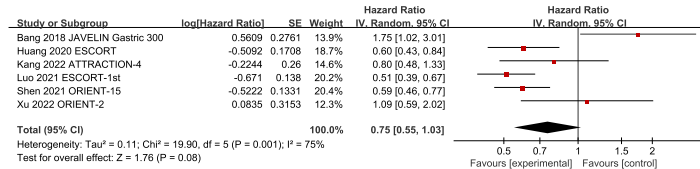
Without liver metastasis



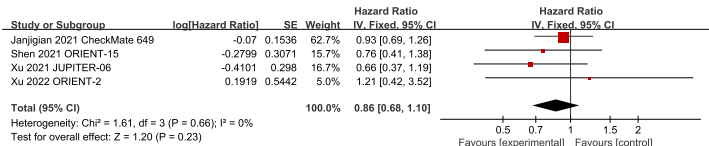
H PD-L1 expression on TPS <1%



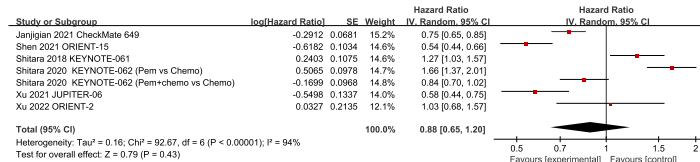
PD-L1 expression on TPS ≥1%



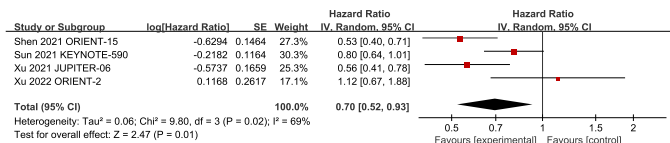
I PD-L1 expression on CPS <1



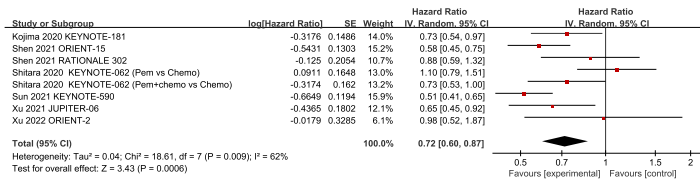
PD-L1 expression on CPS ≥1



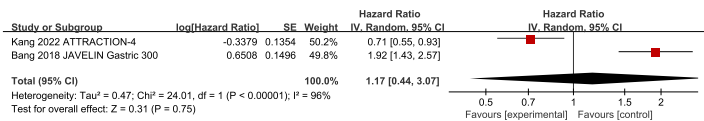
PD-L1 expression on CPS <10



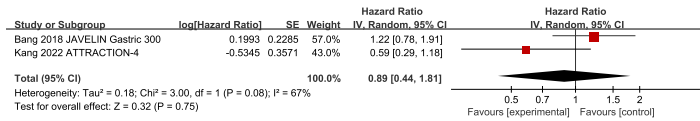
PD-L1 expression on CPS ≥10



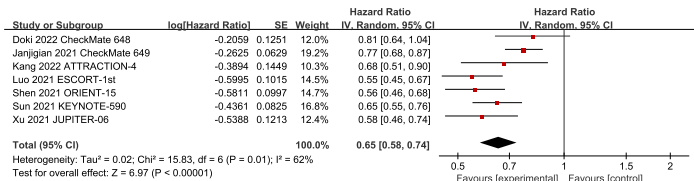
J Primary gastric tumour



Primary oesophagogastric junction tumour



K 0 prior therapy



1 prior therapy

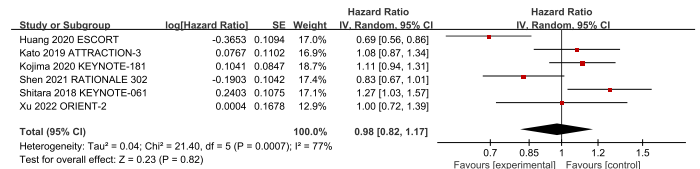
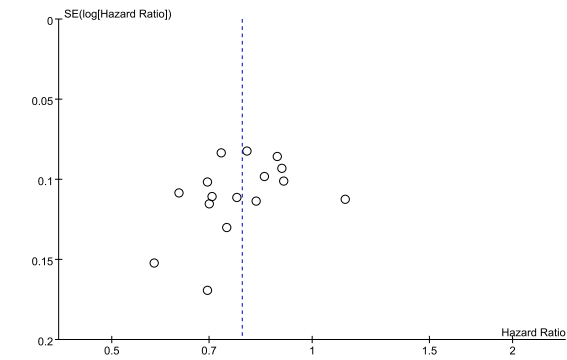
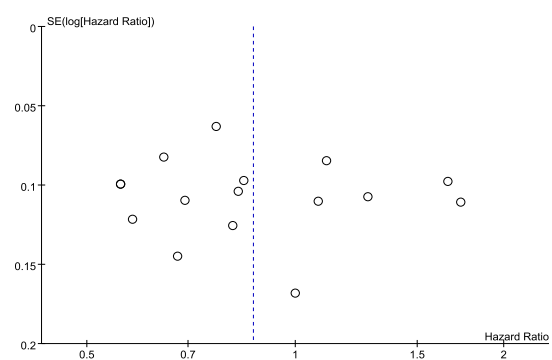


Figure S6: Forest plots of HRs comparing PFS between anti-PD-1/PD-L1 therapy and chemotherapy in gastroduodenal cancer with respect to (A) age group, (B) gender, (C) PS score, (D) smoking status, (E) histological type, (F) number of organs with metastases, (G) liver metastatic status, (H) PD-L1 expression on TPS, (I) PD-L1 expression on CPS, (J) primary tumor sites, (K) number of prior therapies. Statistical analyses were performed by using Review Manager 5.3 software; forest plots were used to assess HRs to describe the relationship between treatment and clinical outcomes in the specified cohorts of patients.

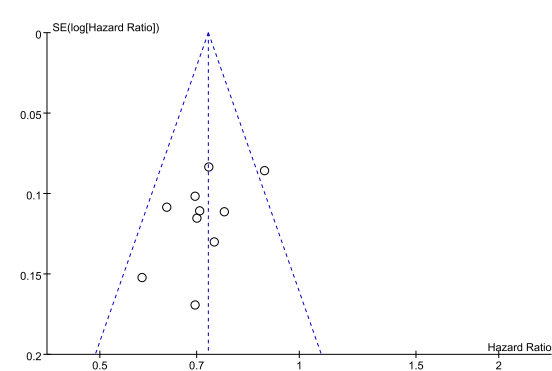
A



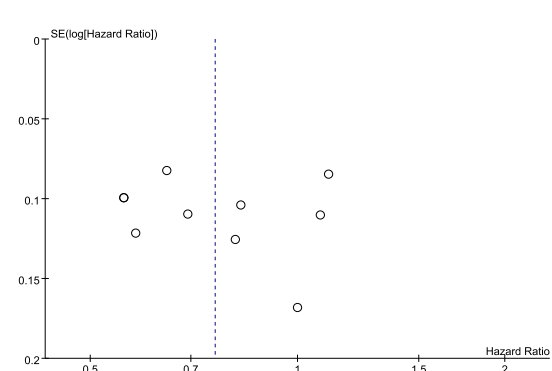
B



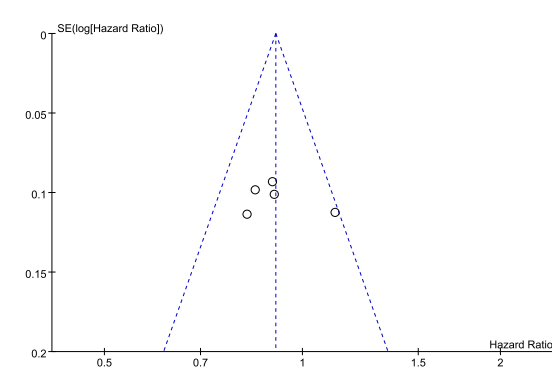
C



D



E



F

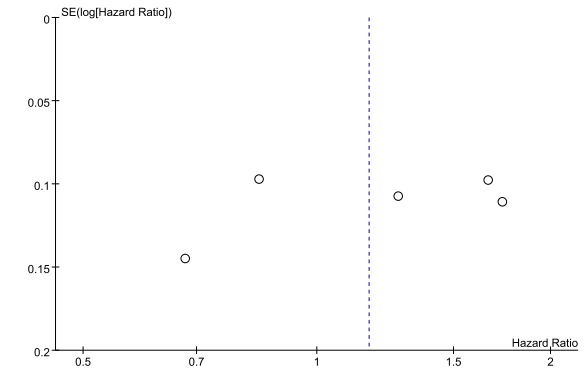
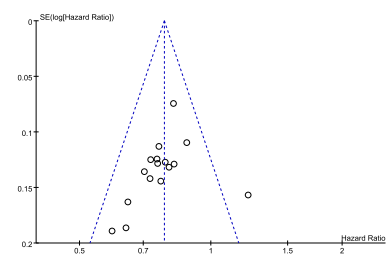
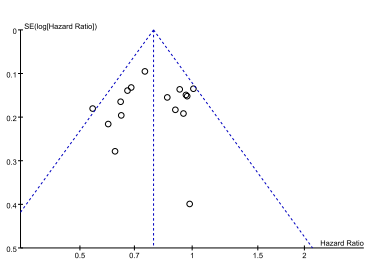


Figure S7: Funnel plots for (A) OS and (B) PFS between anti-PD-1/PD-L1 therapy and chemotherapy in gastroesophageal cancer; (C) OS and (D) PFS in EC; (E) OS and (F) PFS in GC/GEJC. Statistical analyses were performed by using Review Manager 5.3 software; funnel plots were used to assess publication bias.

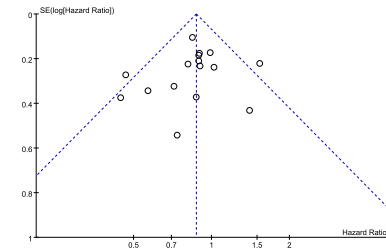
A Aged <65 years



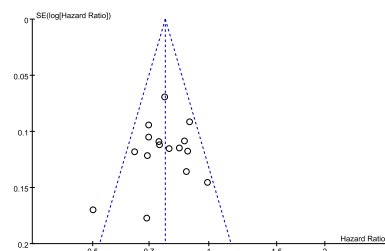
Aged ≥65 years



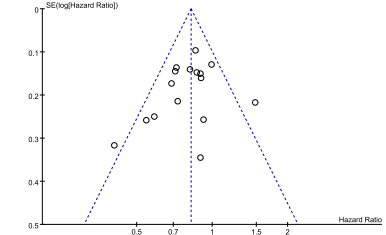
B Female



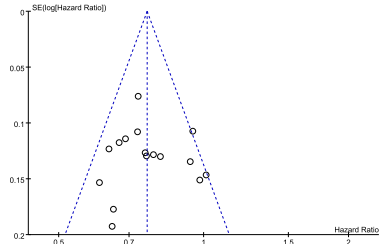
Male



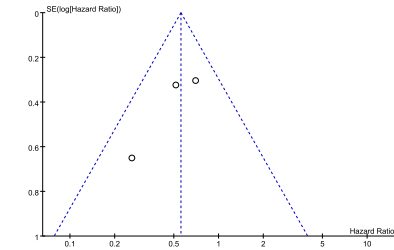
C PS 0



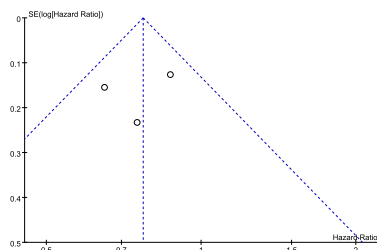
PS 1



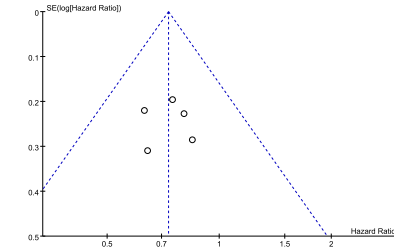
D Active smoker



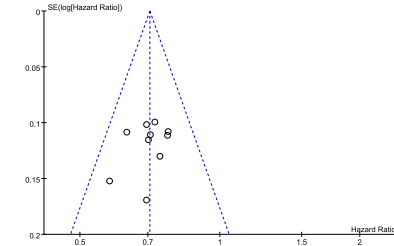
Previous smoker



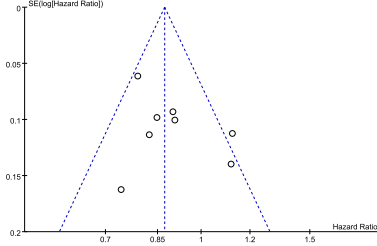
Never smoker



E Squamous carcinoma

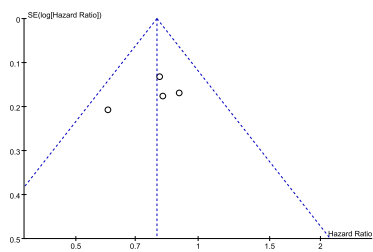
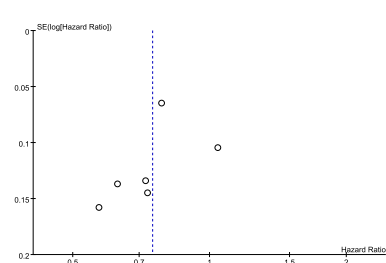


Adenocarcinoma



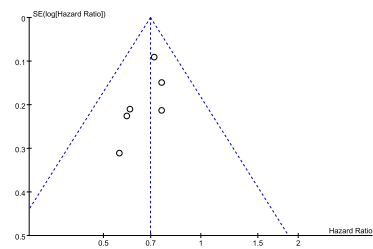
F

With 1 organ metastasis

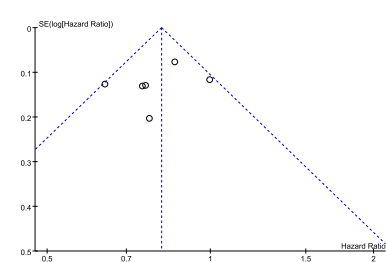
With ≥ 2 organs metastases

G

With liver metastasis

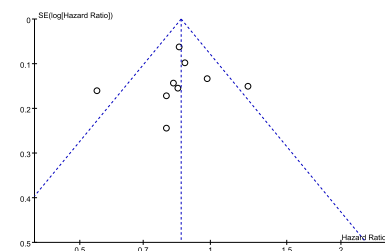
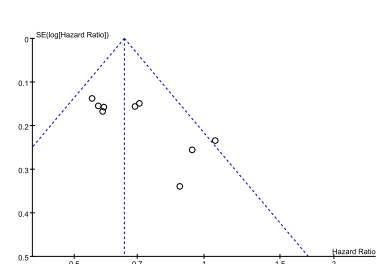


Without liver metastasis



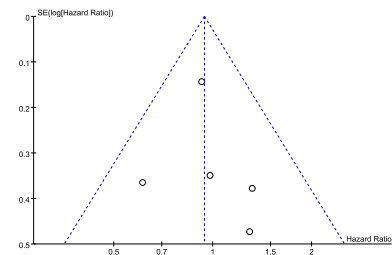
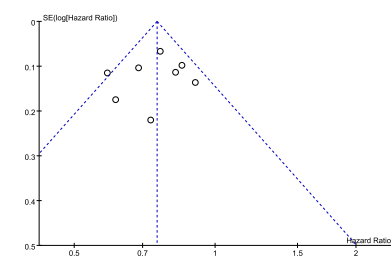
H

PD-L1 expression on TPS <1%

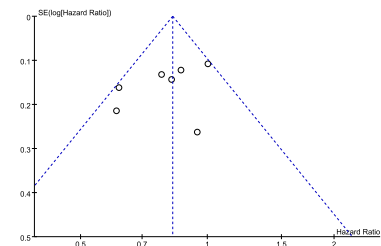
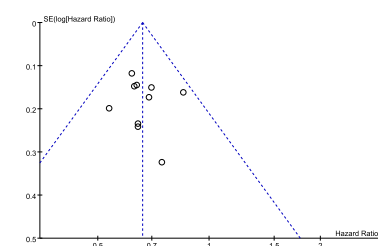
PD-L1 expression on TPS $\geq 1\%$ 

I

PD-L1 expression on CPS <1

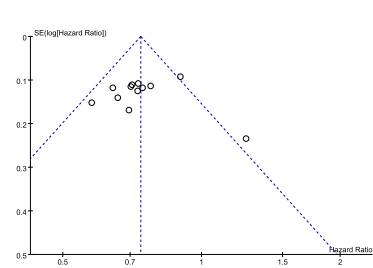
PD-L1 expression on CPS ≥ 1 

PD-L1 expression on CPS <10

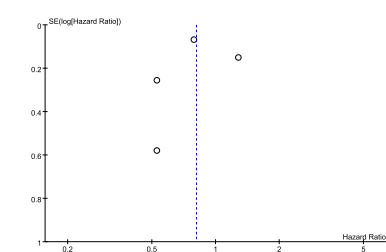
PD-L1 expression on CPS ≥ 10 

J

Asian

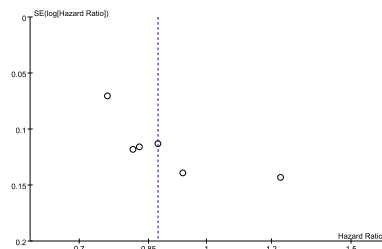


White

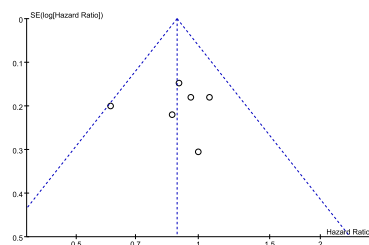


K

Primary gastric tumour

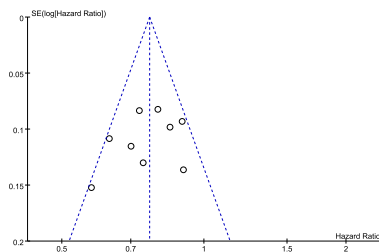


Primary oesophagogastric junction tumour



L

0 prior therapy



1 prior therapy

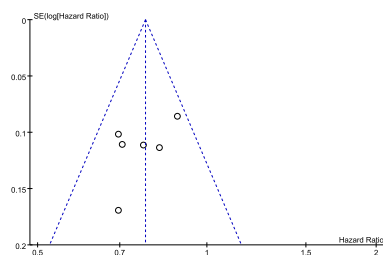
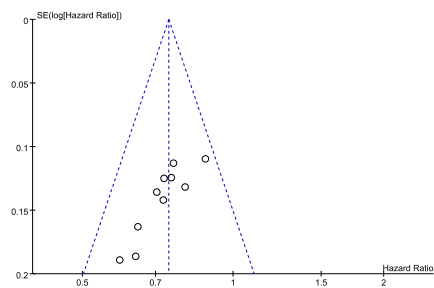
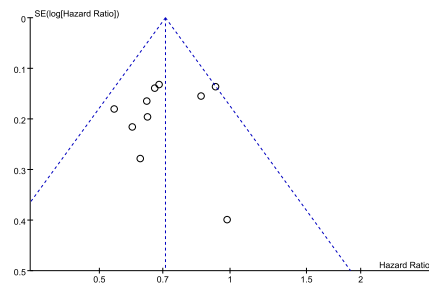


Figure S8: Funnel plots for OS in the subgroup of gastroesophageal cancer with respect to (A) age group, (B) gender, (C) PS score, (D) smoking status, (E) histological type, (F) number of organs with metastases, (G) liver metastatic status, (H) PD-L1 expression on TPS, (I) PD-L1 expression on CPS, (J) race, (K) primary tumor sites, (L) number of prior therapies. Statistical analyses were performed by using Review Manager 5.3 software; funnel plots were used to assess publication bias.

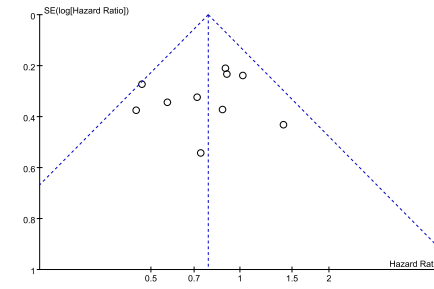
A Aged <65 years



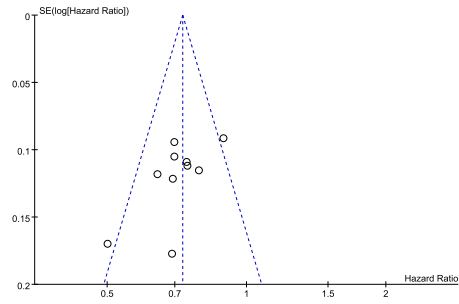
Aged ≥65 years



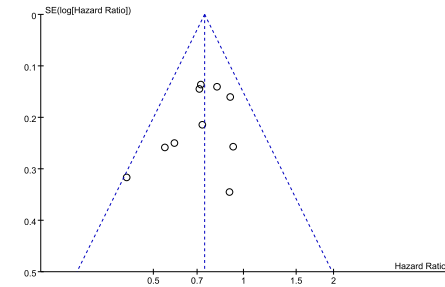
B Female



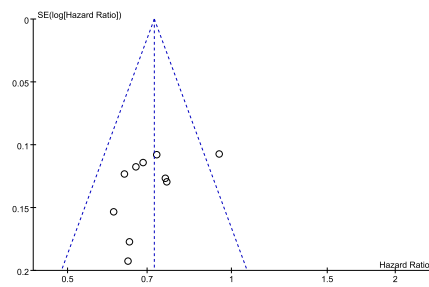
Male



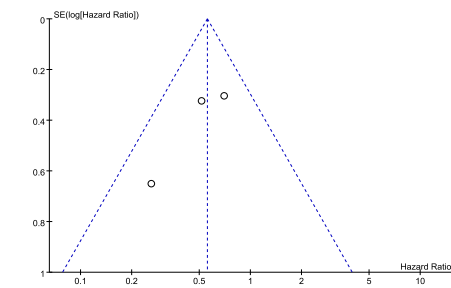
C PS 0



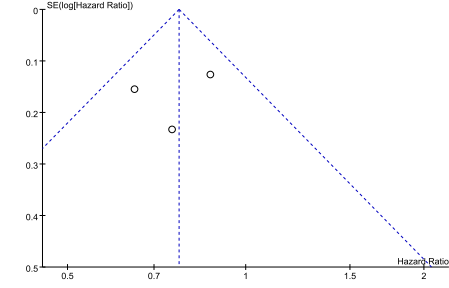
PS 1



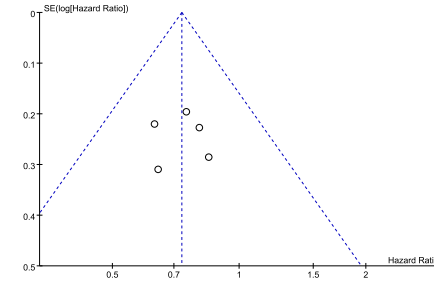
D Active smoker



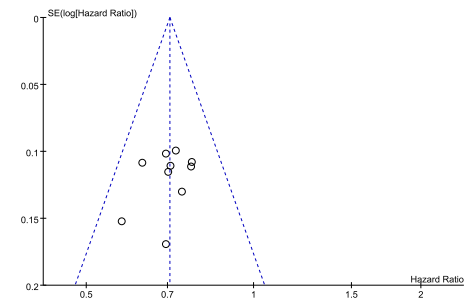
Previous smoker



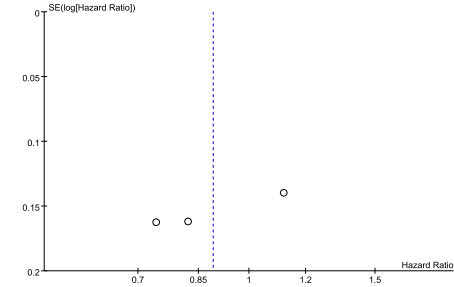
Never smoker

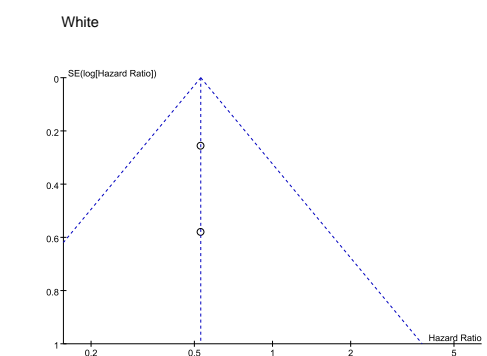
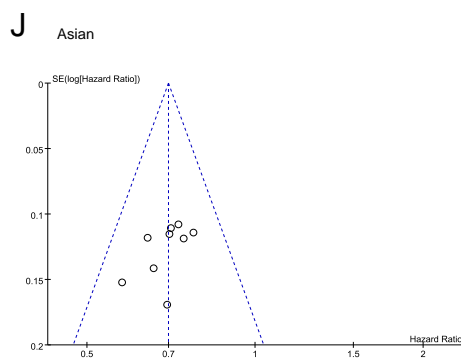
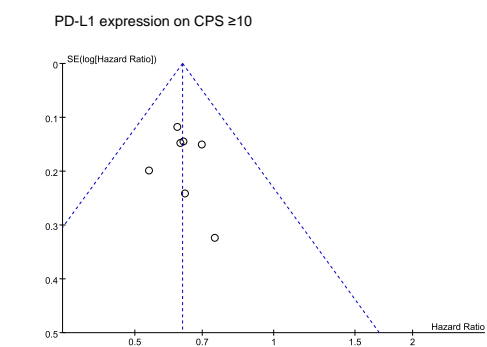
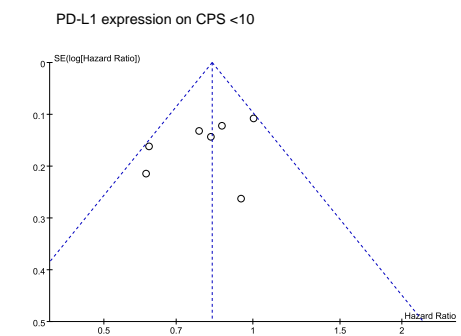
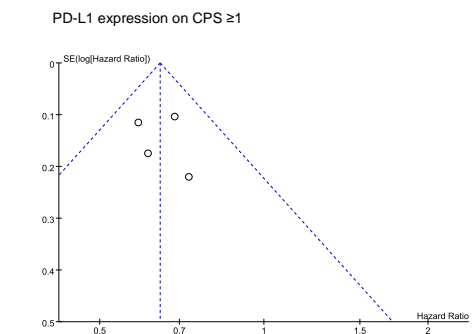
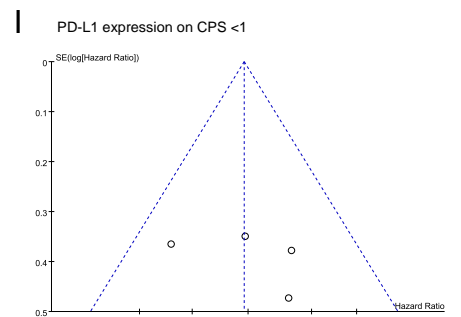
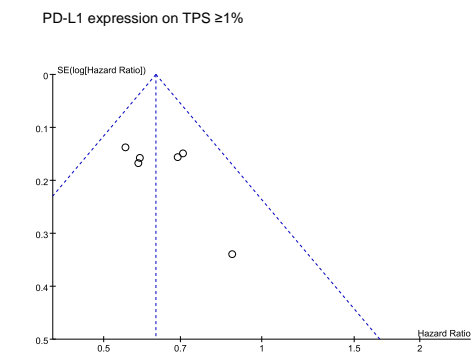
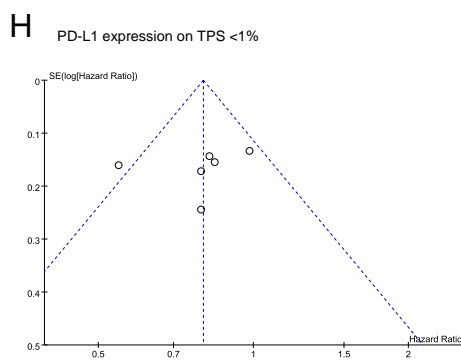
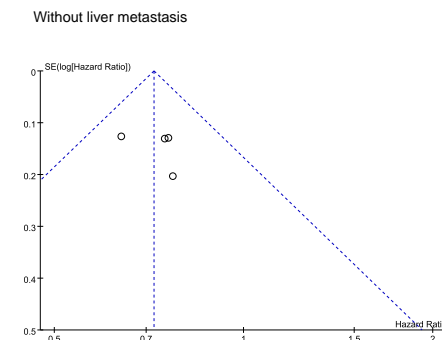
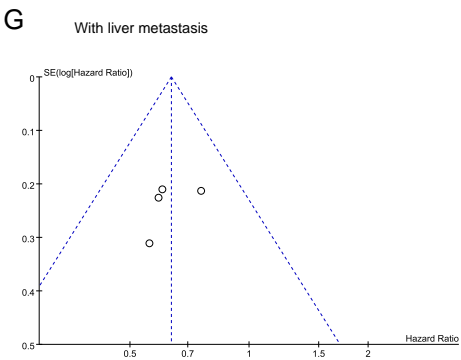
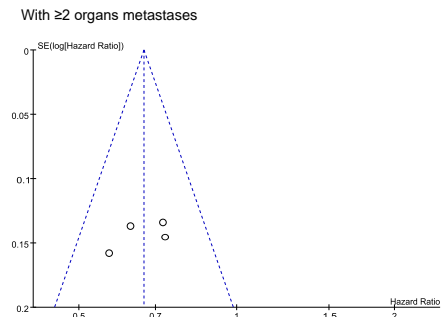
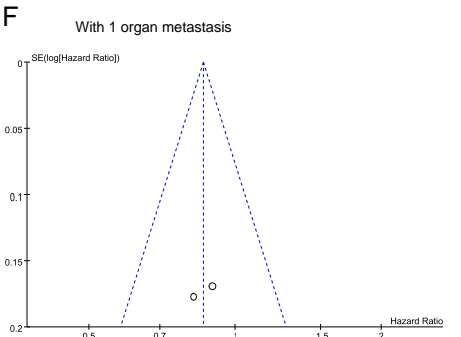


E Squamous



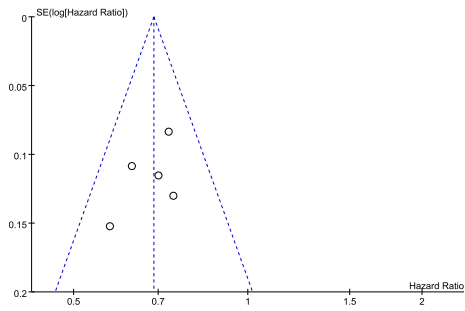
Adenocarcinoma





K

0 prior therapy



1 prior therapy

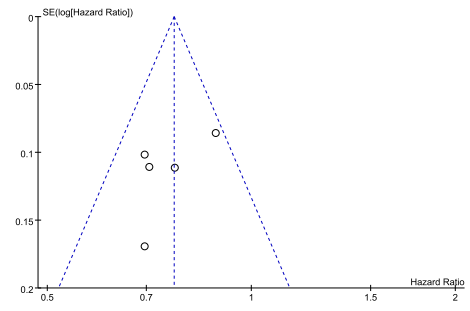
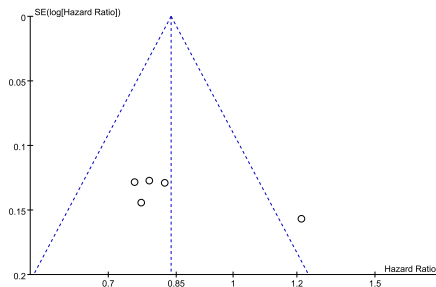
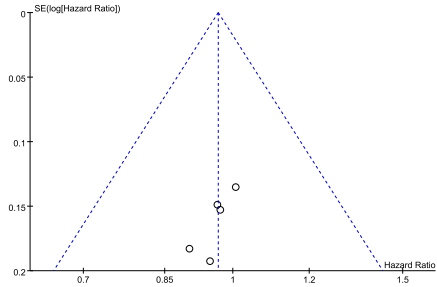


Figure S9: Funnel plots for OS in the subgroup of EC with respect to (A) age group, (B) gender, (C) PS score, (D) smoking status, (E) histological type, (F) number of organs with metastases, (G) liver metastatic status, (H) PD-L1 expression on TPS, (I) PD-L1 expression on CPS, (J) race, (K) number of prior therapies. Statistical analyses were performed by using Review Manager 5.3 software; funnel plots were used to assess publication bias.

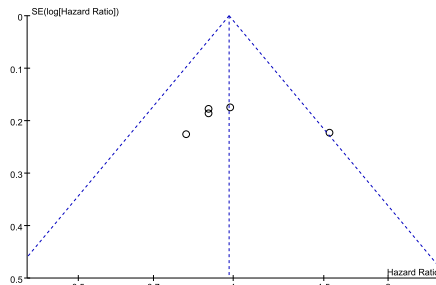
A Aged <65 years



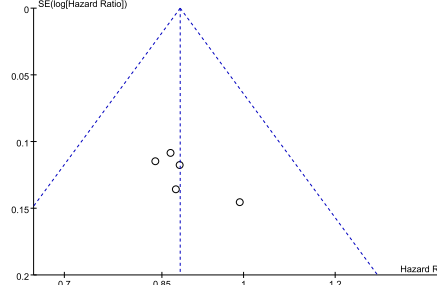
Aged ≥65 years



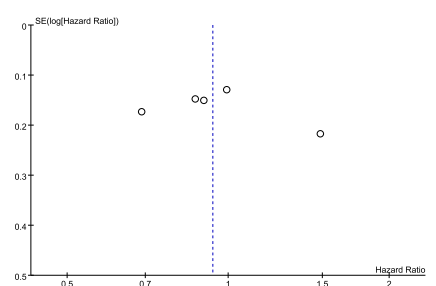
B Female



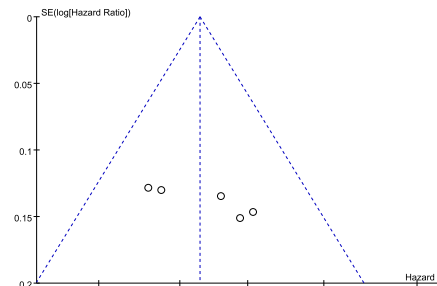
Male



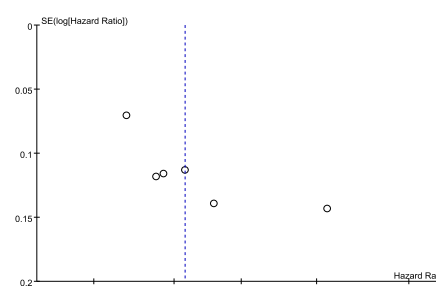
C PS 0



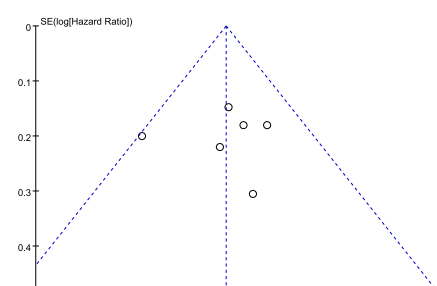
PS 1



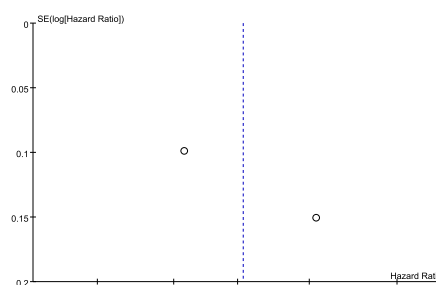
D Primary gastric tumour



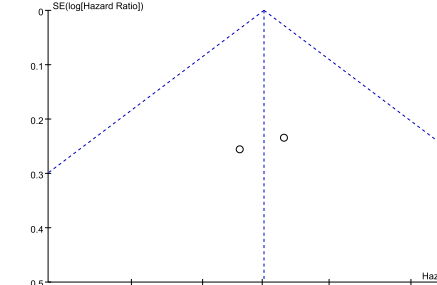
Primary oesophagogastric junction tumour



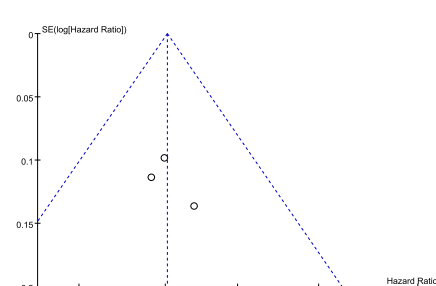
E PD-L1 expression on <1% of Tumour-cell



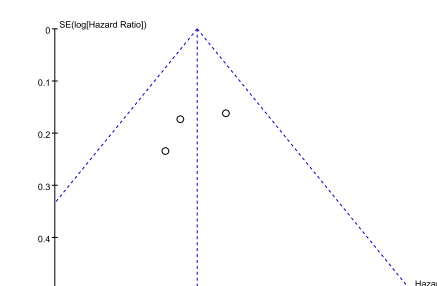
PD-L1 expression on ≥1% of Tumour-cell



F PD-L1 combined positive score of 1 or higher



PD-L1 combined positive score of 10 or higher



G

0 prior therapy

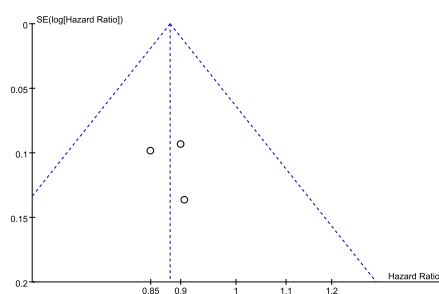
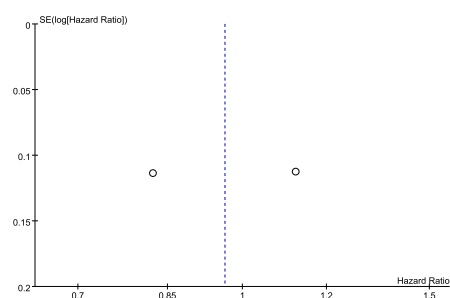
 ≥ 1 prior therapy

Figure S10: Funnel plots for OS in the subgroup of GC/GEJC with respect to (A) age group, (B) gender, (C) PS score, (D) primary tumour sites, (E) PD-L1 expression on TPS, (F) PD-L1 expression on CPS, (G) number of prior therapies. Statistical analyses were performed by using Review Manager 5.3 software; funnel plots were used to assess publication bias.