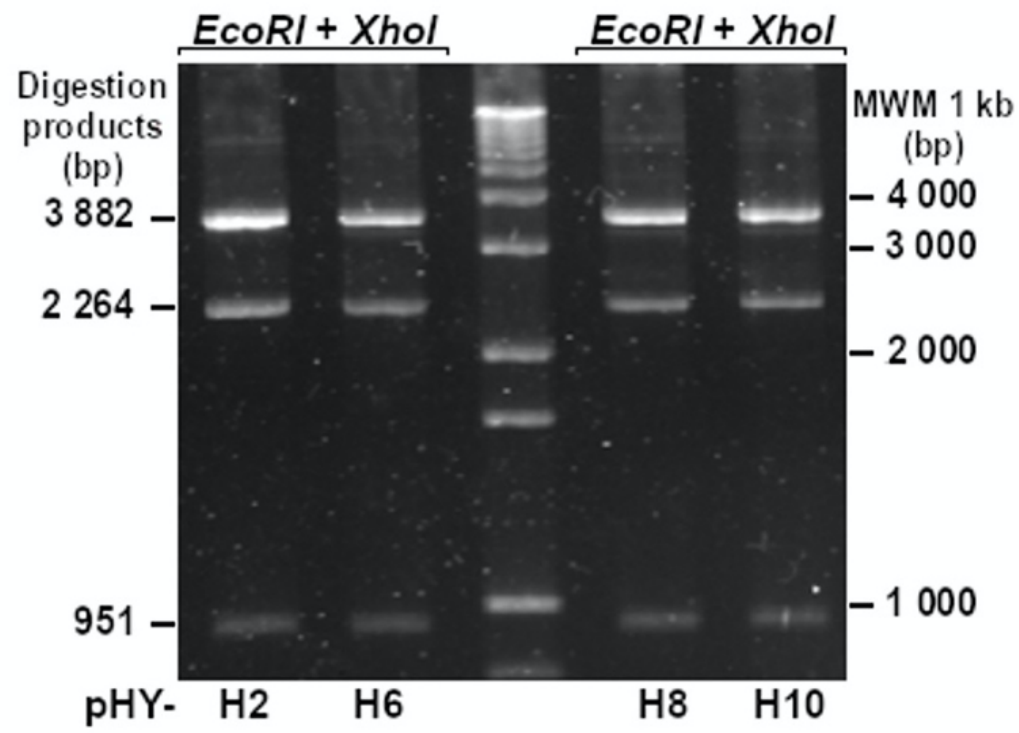
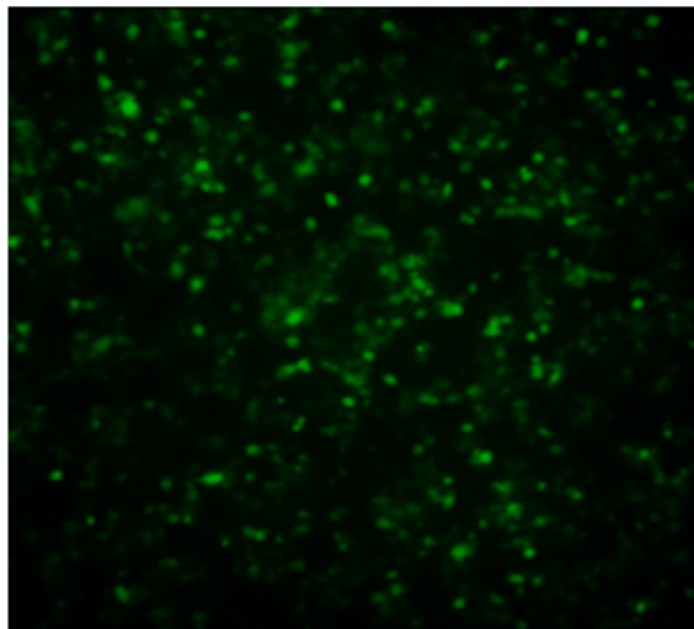


A)



B)



**Figure S1. Analysis of pHY-H(-2,-6,-8 and -10) generated HBV/H replicons.** Figure S1. **A)** HBV replicons in pHY-106 were digested with *EcoRI* and *XhoI* restriction enzymes and the products were separated in 1% agarose gel by electrophoresis. Lanes from left to right: pHY-H2, pHY-H6, 1kb Plus DNA ladder, pHY-H8 and pHY-H10. **B)** Stereoscope (Olympus) 20X image. Green fluorescent protein is visualized after transfection with GFP plasmid to evaluate transfection efficiency.