

File: RSE-02-MS

Date Run: 11-10-2021 (Time Run: 16:00:36)

Sample: MEHWISH SOLANGI /PROF. DR. KHALID

Instrument: JEOL 600H-1

Run By: MASS LAB 104

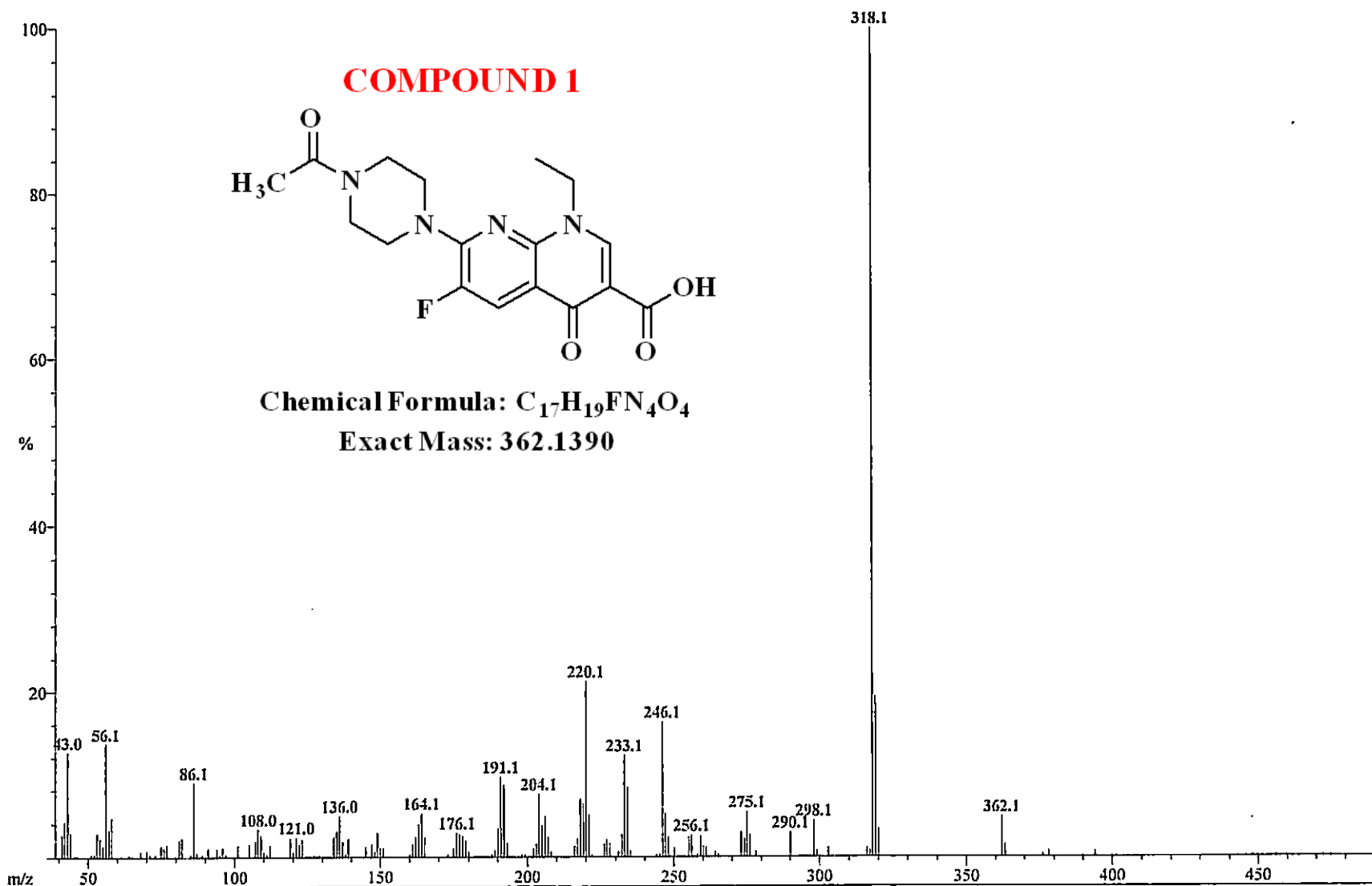
Inlet: Direct Probe

Ionization mode: EI+

Scan: 23-27

Base: m/z 318; 10.2%FS TIC: 525388

#Ions: 227



File: RSE-02-MS Date Run: 11-10-2021 (Time Run: 16:00:36)
Sample: MEHWISH SOLANGI /PROF. DR. KHALID
Instrument: JEOL 600H-1
Inlet: Direct Probe Ionization mode: EI+

Run By: MASS LAB 104

Scan: 23-27
Base: m/z 318; 10.2%FS TIC: 525388

#Ions: 227

Threshold: .5% of Base

Displayed TIC: 525388

Mass	%Base	Mass	%Base	Mass	%Base	Mass	%Base	Mass	%Base	Mass	%Base	Mass	%Base	Mass	%Base
41.0	2.7	81.0	2.1	120.1	.7	161.1	1.6	193.1	1.8	227.1	2.2	261.1	1.2	320.1	3.4
42.0	4.3	82.0	2.3	121.0	2.4	162.0	2.5	202.1	1.1	228.1	1.7	264.1	.7	362.1	4.8
43.0	12.7	86.1	9.0	122.1	1.5	163.1	4.0	203.1	1.6	231.1	.7	273.1	3.0	363.2	1.6
44.0	2.9	87.1	.6	123.1	2.2	164.1	5.3	204.1	7.6	232.1	2.7	274.1	2.3		
53.0	2.9	91.1	1.2	134.0	2.4	165.1	2.5	205.1	3.9	233.1	12.3	275.1	5.4		
54.0	2.3	94.0	1.1	135.0	3.1	175.1	1.1	206.1	4.9	234.1	8.4	276.1	2.7		
55.1	1.4	96.0	1.2	136.0	5.0	176.1	3.0	207.1	2.4	235.1	.9	278.1	.7		
56.1	13.7	101.1	1.4	137.0	1.9	177.1	2.8	208.1	.7	246.1	16.4	290.1	3.0		
57.1	3.3	105.1	1.6	139.0	2.2	178.1	2.6	216.1	1.4	247.1	5.3	298.1	4.4		
58.1	4.8	107.0	2.0	145.0	1.3	179.1	2.0	217.1	2.3	248.1	2.5	299.1	.8		
68.1	.8	108.0	3.4	147.1	1.6	180.0	.7	218.1	7.0	250.1	1.1	303.1	1.1		
70.1	.8	109.1	2.7	148.1	.7	189.0	.8	219.1	6.5	255.1	2.5	316.1	1.2		
75.0	1.5	110.1	.7	149.1	3.0	190.1	3.5	220.1	21.3	256.1	2.6	317.1	.9		
76.0	1.1	112.1	1.5	150.1	1.2	191.1	9.7	221.1	5.1	259.1	2.5	318.1	100.0		
77.0	1.5	119.1	2.3	151.1	1.1	192.1	8.7	226.1	1.6	260.1	1.4	319.1	19.4		

File: RSE-05-MS
Sample: MEHWISH SOLANGI /PROF. DR. KHALID
Instrument: JEOL 600H-1
Inlet: Direct Probe

Date Run: 11-10-2021 (Time Run: 15:52:24)

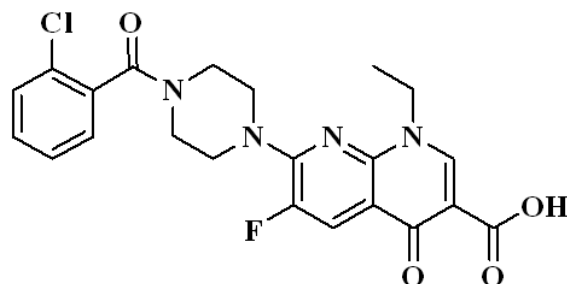
Ionization mode: EI+

Run By: MASS LAB 104

Scan: 25

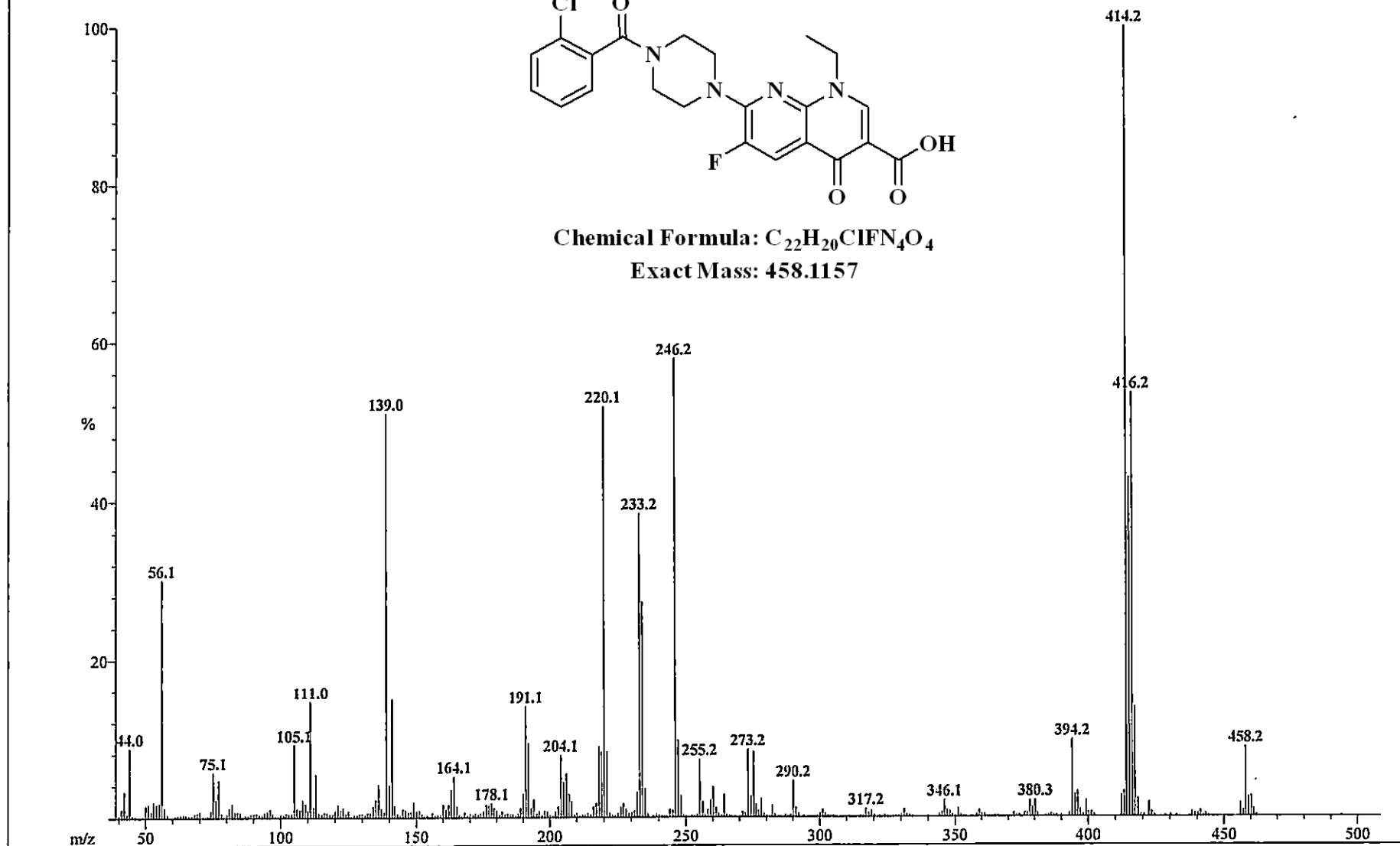
Base: m/z 414; 100%FS TIC: 9771184

#Ions: 378



Chemical Formula: $C_{22}H_{20}ClFN_4O_4$

Exact Mass: 458.1157



File: RSE-05-MS Date Run: 11-10-2021 (Time Run: 15:52:24)
Sample: MEHWISH SOLANGI /PROF. DR. KHALID
Instrument: JEOL 600H-1
Inlet: Direct Probe Ionization mode: EI+

Run By: MASS LAB 104

Scan: 25
Base: m/z 414; 100%FS TIC: 9771184

#Ions: 378

Threshold: 1% of Base

Displayed TIC: 9771184

Mass	%Base	Mass	%Base	Mass	%Base	Mass	%Base	Mass	%Base	Mass	%Base	Mass	%Base	Mass	%Base
41.0	1.2	96.1	1.2	137.1	1.2	178.1	1.9	217.1	1.8	248.2	2.8	291.2	1.3	414.2	100.0
42.0	3.3	105.1	9.2	139.0	51.0	179.1	1.3	218.2	9.0	255.2	7.4	317.2	1.1	415.2	42.9
44.0	8.8	106.1	1.2	140.0	4.1	189.1	1.2	219.1	8.3	256.2	2.0	331.2	1.1	416.2	53.5
50.0	1.6	107.1	1.0	141.0	15.0	190.1	3.0	220.1	51.9	258.2	1.0	346.1	2.2	417.2	13.9
51.0	1.8	108.1	2.3	142.0	1.6	191.1	14.1	221.2	8.3	259.2	2.2	351.2	1.1	418.3	2.3
53.0	2.0	109.1	1.8	145.1	1.1	192.1	9.5	226.2	1.3	260.1	3.9	378.2	2.1	422.3	1.9
54.0	1.8	111.0	14.7	149.1	2.0	193.1	1.3	227.2	1.9	261.2	1.3	379.3	1.3	456.1	1.8
55.1	1.9	112.1	1.4	160.1	1.7	194.1	2.3	228.1	1.1	264.1	2.9	380.3	2.1	458.2	8.8
56.1	30.2	113.0	5.5	161.1	1.0	203.1	1.4	232.2	3.2	273.2	8.5	394.2	9.8	459.2	2.6
57.1	1.3	121.1	1.6	162.1	1.7	204.1	7.9	233.2	38.5	274.2	2.7	395.2	2.9	460.2	2.7
75.1	5.8	122.1	1.0	163.1	3.5	205.1	4.5	234.2	27.4	275.2	8.3	396.2	3.3	461.2	1.1
76.0	2.2	123.1	1.3	164.1	5.3	206.1	5.6	235.2	3.7	276.2	1.7	397.2	1.0		
77.0	4.8	134.1	1.5	165.1	1.5	207.1	3.0	244.1	1.1	278.2	2.4	399.2	2.1		
81.0	1.3	135.0	2.3	176.1	1.7	208.1	2.0	246.2	57.9	282.2	1.6	412.2	2.7		
82.0	1.8	136.1	4.3	177.1	1.6	216.1	1.4	247.2	9.8	290.2	4.6	413.2	3.3		

File: RSE-07-MS-
Sample: MEHWISH SOLANGI /PROF. DR. KHALID
Instrument: JEOL 600H-1
Inlet: Direct Probe

Date Run: 11-10-2021 (Time Run: 16:10:01)

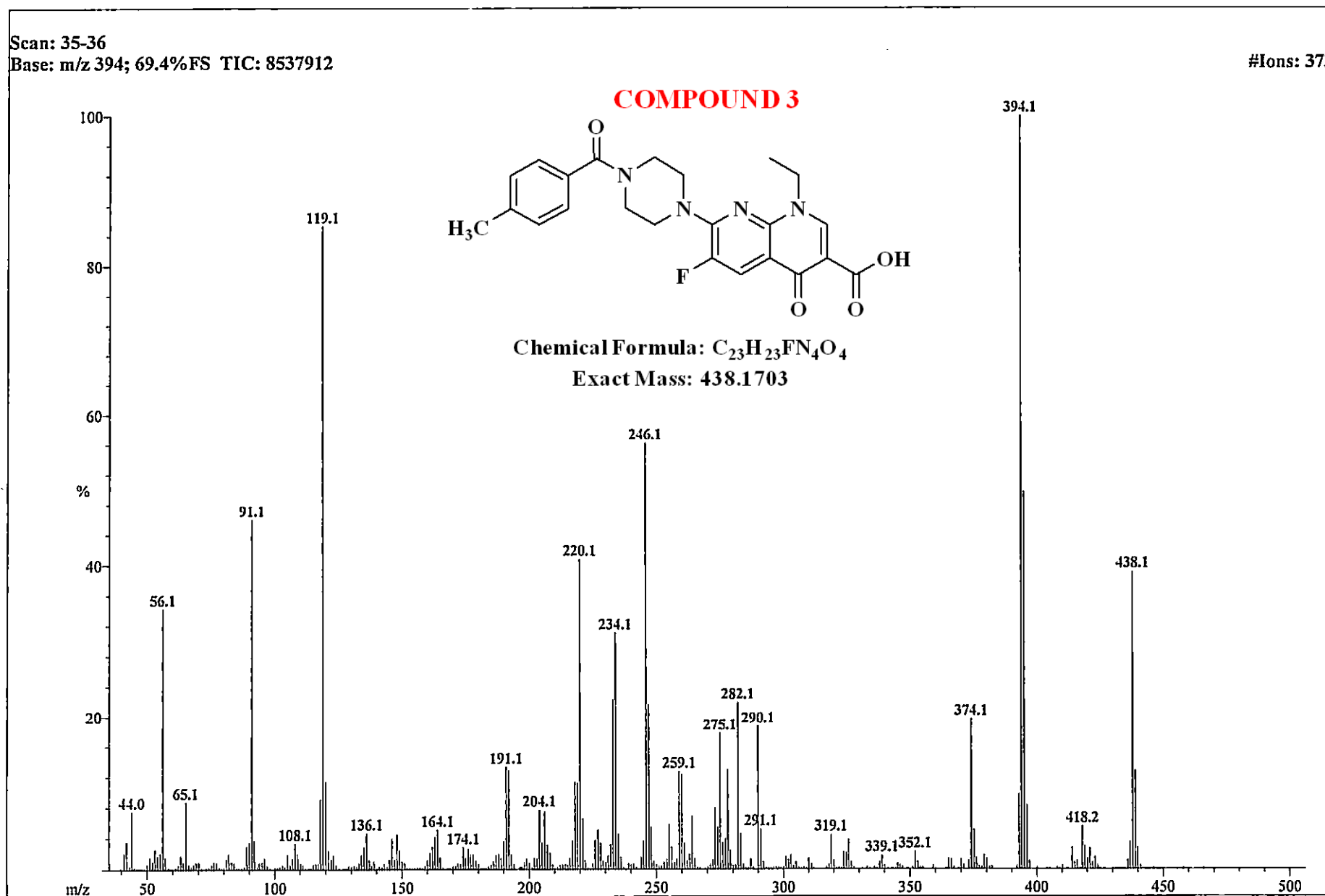
Run By: MASS LAB 104

Ionization mode: EI+

Scan: 35-36

Base: m/z 394; 69.4%FS TIC: 8537912

#Ions: 373



File: RSE-07-MS- Date Run: 11-10-2021 (Time Run: 16:10:01)
Sample: MEHWISH SOLANGI /PROF. DR. KHALID
Instrument: JEOL 600H-1
Inlet: Direct Probe Ionization mode: EI+

Run By: MASS LAB 104

Scan: 35-36
Base: m/z 394; 69.4%FS TIC: 8537912

#Ions: 373

Threshold: .5% of Base

Displayed TIC: 8537912

Mass	%Base	Mass	%Base	Mass	%Base	Mass	%Base	Mass	%Base	Mass	%Base	Mass	%Base	Mass	%Base
41.1	2.1	91.1	46.1	134.1	1.9	180.1	.8	218.1	11.4	254.1	1.3	291.1	5.2	374.1	19.7
42.1	3.6	92.1	3.8	135.1	2.9	185.1	.6	219.1	11.2	255.1	5.8	292.1	1.0	375.2	5.1
44.0	7.5	94.0	.9	136.1	4.7	186.1	1.0	220.1	40.8	256.1	2.9	301.1	1.6	376.2	1.5
50.1	.7	95.1	1.0	137.1	1.3	187.1	1.9	221.1	6.6	257.1	.9	302.1	1.2	379.1	1.8
51.1	1.6	96.1	1.5	138.1	.6	188.1	2.0	222.1	1.2	258.1	1.3	303.1	1.8	380.1	1.4
52.1	1.0	97.1	.6	139.0	1.1	189.1	1.5	225.1	.8	259.1	12.8	304.0	.5	393.2	9.8
53.0	2.6	103.1	.7	143.0	.8	190.1	3.6	226.1	3.7	260.1	12.4	305.1	.9	394.1	100.0
54.1	1.8	105.1	2.0	145.1	1.3	191.1	13.4	227.1	5.1	261.1	3.4	310.1	1.4	395.1	49.7
55.1	2.1	106.1	.7	146.1	4.0	192.1	12.9	228.1	3.4	262.1	1.1	311.1	.7	396.1	8.3
56.1	34.3	107.1	1.4	147.1	1.3	193.1	1.9	229.2	1.0	263.1	1.9	318.1	.7	397.1	1.1
57.1	1.6	108.1	3.4	148.1	4.6	194.1	.7	230.1	.9	264.1	6.9	319.1	4.5	414.1	2.9
62.1	.7	109.1	2.1	149.1	2.5	198.1	1.0	231.1	1.8	265.1	1.4	320.1	1.2	415.1	.9
63.1	1.8	110.1	.8	150.1	1.1	199.1	1.4	232.1	3.2	271.1	.6	324.1	2.2	416.1	1.1
64.1	.9	111.1	.7	151.1	.9	200.1	.8	233.1	22.3	272.1	1.3	325.1	2.2	418.2	5.5
65.1	8.8	115.1	.7	160.1	1.2	202.1	1.4	234.1	31.1	273.1	8.0	326.1	3.8	419.2	3.0
66.1	.7	116.1	.8	161.1	2.2	203.1	1.4	235.1	4.6	274.1	5.4	327.1	.9	420.2	1.4
68.1	.7	117.1	.8	162.1	3.0	204.1	7.7	236.1	1.6	275.1	17.8	338.2	1.0	421.2	2.7
69.1	1.0	118.1	9.1	163.1	4.3	205.1	3.4	239.1	.8	276.1	3.5	339.1	1.8	422.2	.9
70.1	1.0	119.1	85.4	164.1	5.1	206.1	7.5	240.1	.6	277.1	3.9	340.1	.5	423.2	1.6
75.1	.7	120.1	11.5	165.1	1.6	207.1	3.2	241.1	.7	278.1	12.9	345.2	.8	424.1	.6
76.1	1.0	121.1	2.5	172.1	.8	208.1	2.2	244.1	1.6	279.1	2.5	346.2	.6	436.1	1.2
77.1	1.0	122.1	1.3	173.1	.7	209.1	.7	245.1	3.7	280.1	.6	352.1	2.2	437.1	3.5
81.1	1.4	123.1	1.9	174.1	2.9	212.1	.6	246.1	56.3	281.1	.6	353.1	1.0	438.1	39.1
82.1	2.1	124.1	.7	175.1	1.5	213.1	.6	247.1	21.6	282.1	21.9	365.1	1.3	439.1	12.8
83.1	1.0	129.1	.6	176.1	2.7	214.1	.7	248.1	5.4	283.1	4.6	366.1	1.3	440.1	2.8
84.1	.9	131.1	.6	177.1	2.0	215.1	.6	249.1	1.1	284.1	.7	370.2	1.3		
89.1	3.0	132.1	.5	178.1	2.0	216.1	1.5	250.1	.6	287.1	1.3	371.1	.6		
90.1	3.5	133.1	.9	179.1	1.2	217.1	3.7	253.1	1.0	290.1	18.7	373.2	1.1		

File: RSE-12-MS
Sample: MEHWISH SOLANGI / DR. KHALID KHAN
Instrument: JEOL 600H-1
Inlet: Direct Probe

Date Run: 11-11-2021 (Time Run: 15:24:52)

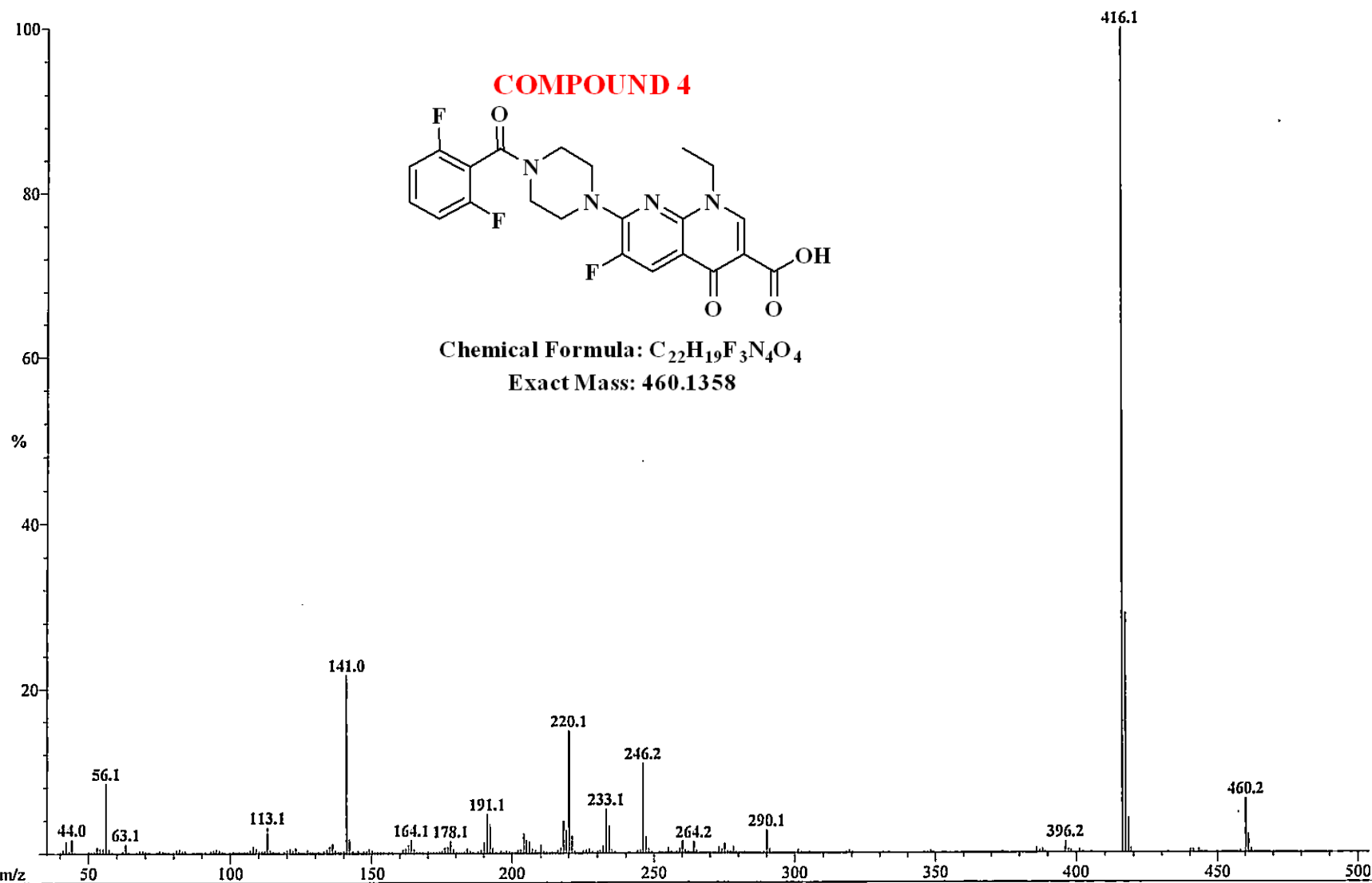
Ionization mode: EI+

Run By: MASS LAB 104

Scan: 24

Base: m/z 416; 100%FS TIC: 3461504

#Ions: 238



File: RSE-12-MS Date Run: 11-11-2021 (Time Run: 15:24:52)
Sample: MEHWISH SOLANGI / DR. KHALID KHAN
Instrument: JEOL 600H-1
Inlet: Direct Probe Ionization mode: EI+

Run By: MASS LAB 104

Scan: 24
Base: m/z 416; 100%FS TIC: 3461504

#Ions: 238

Threshold: .3% of Base

Displayed TIC: 3461504

Mass	%Base	Mass	%Base	Mass	%Base	Mass	%Base	Mass	%Base	Mass	%Base	Mass	%Base	Mass	%Base
41.1	.6	84.1	.3	127.1	.6	163.1	1.1	196.1	.4	222.1	.3	260.1	1.5	396.2	1.5
42.1	1.5	93.0	.3	133.1	.3	164.1	1.7	198.1	.3	225.1	.4	261.2	.4	397.2	.5
43.1	.3	94.0	.4	134.1	.5	165.1	.6	202.1	.4	226.1	.5	264.2	1.4	398.2	.4
44.0	1.8	95.1	.5	135.1	.9	170.1	.3	203.1	.5	227.1	.6	265.1	.4	401.2	.5
53.1	.8	96.1	.4	136.1	1.3	175.1	.4	204.1	2.5	230.1	.3	273.1	.8	416.1	100.0
54.1	.6	107.1	.4	137.1	.5	176.1	.8	205.1	1.6	231.1	.4	274.2	.6	417.2	29.1
55.1	.7	108.1	.9	140.0	.3	177.1	.8	206.1	1.5	232.1	1.0	275.2	1.2	418.2	4.3
56.1	8.5	109.1	.6	141.0	21.8	178.1	1.5	207.1	.6	233.1	5.4	276.1	.4	419.1	.6
57.1	.6	110.1	.3	142.1	1.8	179.1	.6	208.1	.5	234.1	3.3	278.2	.9	440.2	.4
63.1	1.2	111.1	.3	143.1	.3	183.1	.3	210.1	1.1	235.1	.5	290.1	2.8	441.2	.5
68.1	.4	112.1	.4	145.1	.4	184.1	.6	211.1	.3	244.2	.3	291.1	.6	443.2	.6
69.1	.3	113.1	3.2	147.1	.3	185.1	.3	216.1	.5	245.2	.4	301.2	.5	458.2	.3
75.1	.3	114.1	.5	148.1	.4	189.1	.5	217.1	.7	246.2	10.9	319.2	.4	460.2	6.6
76.0	.3	120.1	.5	149.1	.6	190.1	1.4	218.1	3.9	247.2	2.0	348.2	.4	461.2	2.3
81.1	.5	121.1	.7	150.1	.5	191.1	4.8	219.1	2.9	248.2	.7	386.1	.7	462.2	.6
82.0	.6	122.1	.4	161.1	.5	192.1	3.6	220.1	14.9	255.2	.7	387.3	.4		
83.1	.4	123.1	.7	162.1	.7	193.1	.7	221.1	2.2	259.2	.6	388.2	.6		

File: RSE-19-MS
Sample: MEHWISH SOLANGI / DR. KHALID KHAN
Instrument: JEOL 600H-1
Inlet: Direct Probe

Date Run: 11-11-2021 (Time Run: 15:12:13)

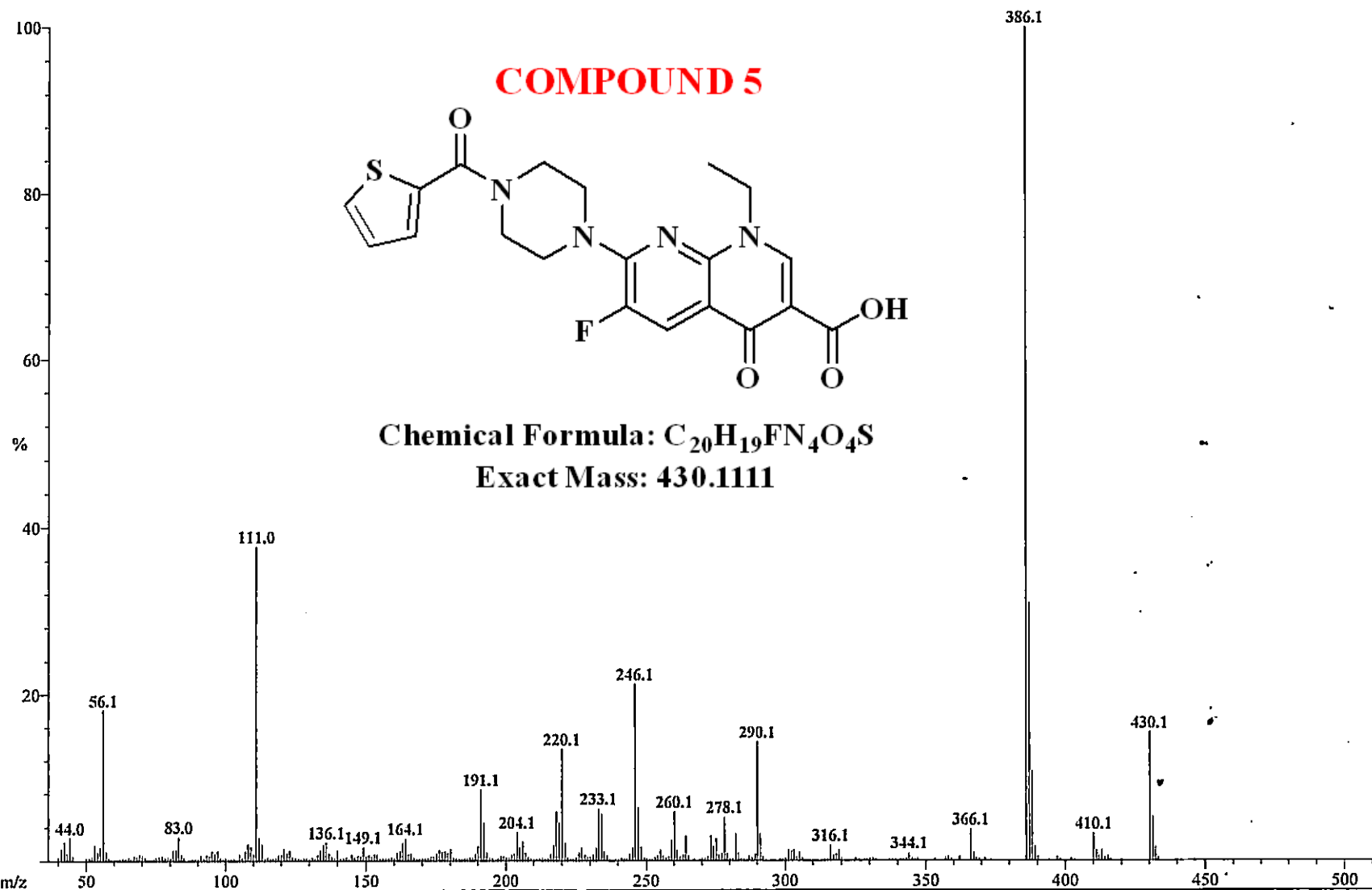
Ionization mode: EI+

Run By: MASS LAB 104

Scan: 31

Base: m/z 386; 100%FS TIC: 5723280

#Ions: 331



File: RSE-19-MS Date Run: 11-11-2021 (Time Run: 15:12:13)
Sample: MEHWISH SOLANGI / DR. KHALID KHAN
Instrument: JEOL 600H-1
Inlet: Direct Probe Ionization mode: EI+

Run By: MASS LAB 104

Scan: 31
Base: m/z 386; 100%FS TIC: 5723280

#Ions: 331

Threshold: 1% of Base

Displayed TIC: 5723280

Mass	%Base	Mass	%Base	Mass	%Base	Mass	%Base	Mass	%Base	Mass	%Base	Mass	%Base	Mass	%Base
41.1	1.5	95.1	1.2	135.1	2.0	180.1	1.4	220.1	13.4	248.2	1.7	290.1	14.3	387.1	31.0
42.1	2.3	97.1	1.3	136.1	2.3	190.1	1.8	221.1	2.1	255.1	1.3	291.1	3.3	388.1	10.7
44.0	2.8	107.1	1.2	140.0	1.3	191.1	8.6	226.1	1.0	259.1	2.6	301.2	1.3	389.2	1.8
53.1	1.9	108.1	2.1	149.1	1.7	192.1	4.5	227.1	1.6	260.1	5.9	302.1	1.2	410.1	3.3
54.1	1.0	109.1	1.7	161.1	1.0	193.1	1.1	232.1	1.6	261.1	1.3	303.1	1.4	411.1	1.3
55.1	1.6	111.0	37.8	162.1	1.2	204.1	3.4	233.1	6.3	264.1	3.0	305.2	1.1	413.1	1.4
56.1	18.2	112.1	2.8	163.1	2.2	205.1	1.6	234.1	5.6	273.2	3.1	316.1	1.9	430.1	15.5
57.1	1.2	113.0	2.0	164.1	2.7	206.1	2.3	235.1	1.1	274.1	1.8	319.1	1.3	431.2	5.3
81.1	1.3	121.1	1.6	176.1	1.3	217.1	1.9	245.2	1.7	275.2	2.7	366.1	3.8	432.1	1.7
82.1	1.3	123.1	1.3	177.1	1.1	218.1	5.9	246.1	21.3	278.1	5.2	367.1	1.0		
83.0	2.9	134.1	1.3	178.1	1.2	219.1	4.6	247.2	6.4	282.1	3.3	386.1	100.0		